
2015

“ “ “
“ “ “
“ “ “
“ “ “

2015

2015

2014

2015

.....	1
.....	1
.....	5
.....	10
.....	17
.....	17
.....	20
.....	22
.....	22
.....	22
.....	28
.....	33
.....	37
.....	37
.....	37
.....	38
.....	39
.....	40
.....	40
.....	47
.....	47
.....	47
.....	54
.....	61
.....	67
.....	67
.....	74
.....	75
.....	76
.....	81

	1
1-1	1
1-2	2
1-3	3
1-1	5
1-2	6
1-3	7
1-3		

3-9	35
3-9	36
3-10	37
3-11	38
3-12	39
	40
4-1	40
4-2	41
4-3	42
4-3	43
4-3	44
4-3	45
4-3	46
4-4	47
4-5	48
4-6	49
4-6	50
4-6	51
4-6	52
4-6	53
4-7	54
4-8	%	55
4-9	%	56
4-9	%	57
4-9	%	58
4-9	%	59
4-9	%	60
4-10	61
4-11	62
4-12	63
4-12	64
4-12		

5-3	%.....	71
5-3	%.....	72
5-3	%.....	73
5-4	%.....	74
5-5	%.....	75
5-6	%.....	76
5-7	76
5-8	77
5-9	78
5-10	81

1.

2015

7597

1-1

生源地	人数	百分比
深圳市	5259	69.22%
广东省（不含深圳市）	1407	18.52%
内蒙古自治区	19	0.25%
辽宁省	24	0.32%
黑龙江省	22	0.29%
江苏省	18	0.24%
安徽省	136	1.79%
福建省	46	0.61%
江西省	58	0.76%
河南省	133	1.75%
湖北省	66	0.87%
湖南省	62	0.82%
广西壮族自治区	115	1.51%
海南省	57	0.75%
重庆市	2	0.03%
四川省	28	0.37%
贵州省	52	0.68%
云南省	32	0.42%
甘肃省	35	0.46%
新疆维吾尔自治区	26	0.34%
合计	7597	

2.

1-2

	2015
	892
	892
	826
	726
	578
	572
	577
	514
	504
	422
	386
	350
	312
	46

3.

1-3

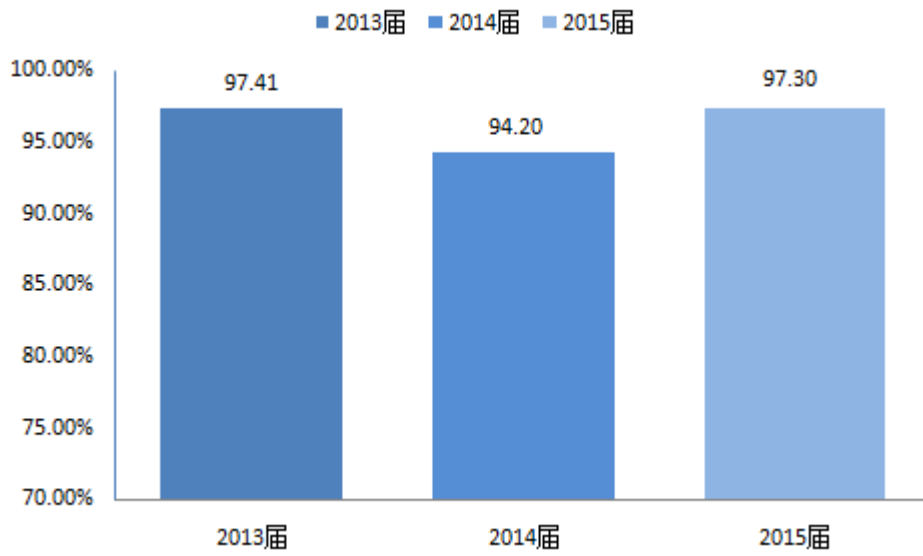
	2015
	307
	242
	215
	178
	178
	164
	164
	158
	154
	152
	149
	149
	147
	145
	144
	142
	140
	136
	136
	136
	129
	124
	123
	122
	121
	117
	116
	116
	115
	115
	106
	100
	89
	87
	87

	2015
	79
	79
	79
	78
	78
	77
	77
	77
	76
	76
	76
	74
	73
	72
	72
	71
	71
	68
	68
	65
	63
	61
	60
	59
	58
	55
	54
	49
	46
	44
	43
	42
	41
	39
	39
	38
	37
	35

	2015
	33
	33
	33
	31
	31
	30
	30
	25
	18

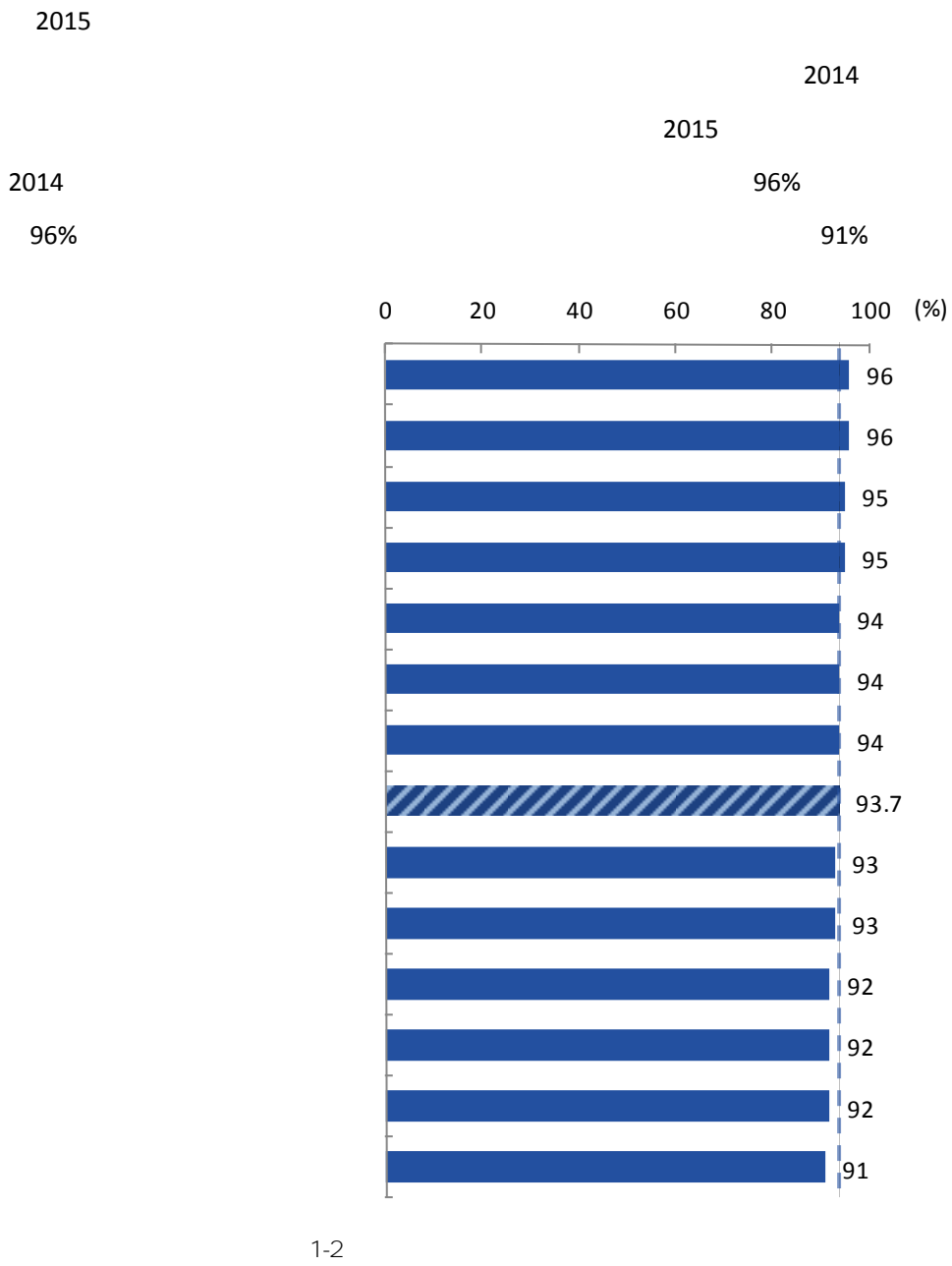
1.

2015 9 , 2015 6808 6624
 97.30% 5896 89% 528
 8.0% 117 120 15 6
 " "

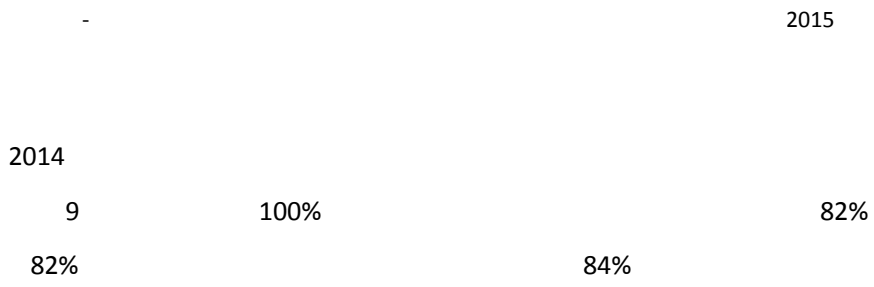


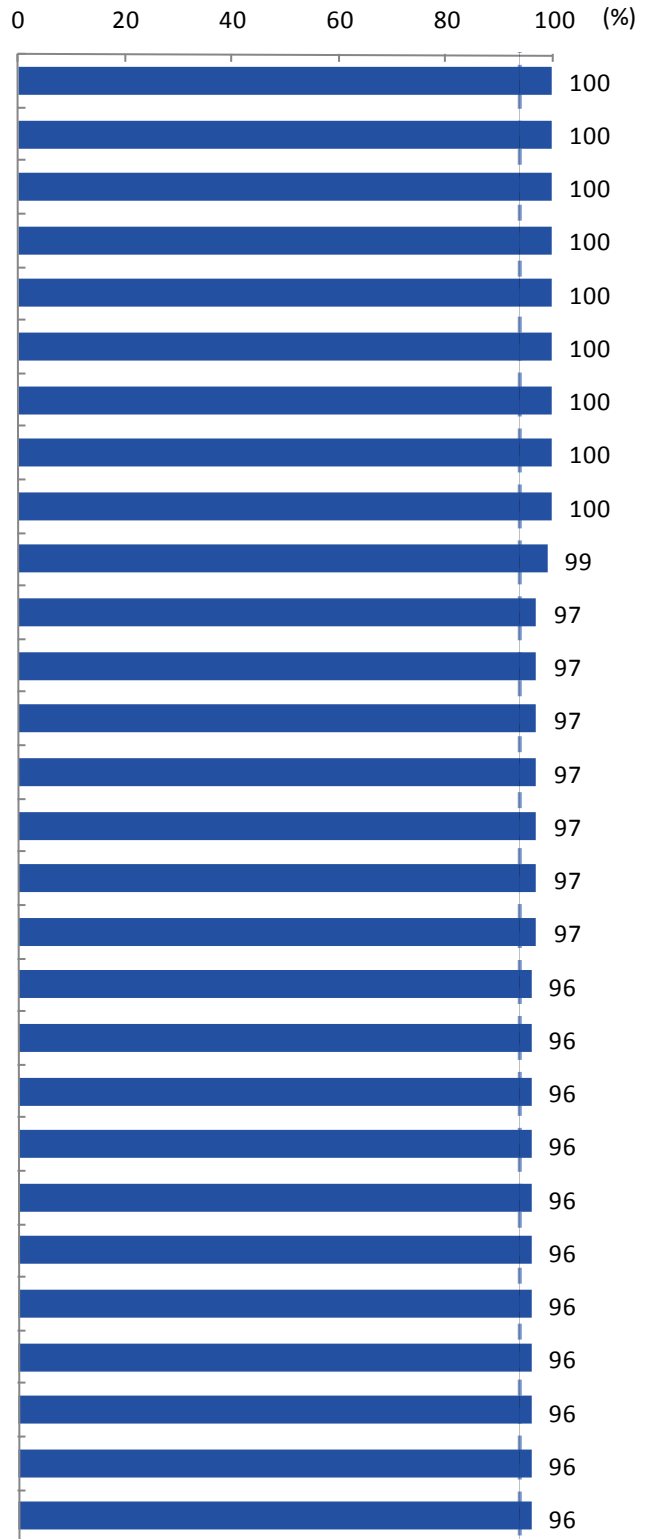
1-1

2.



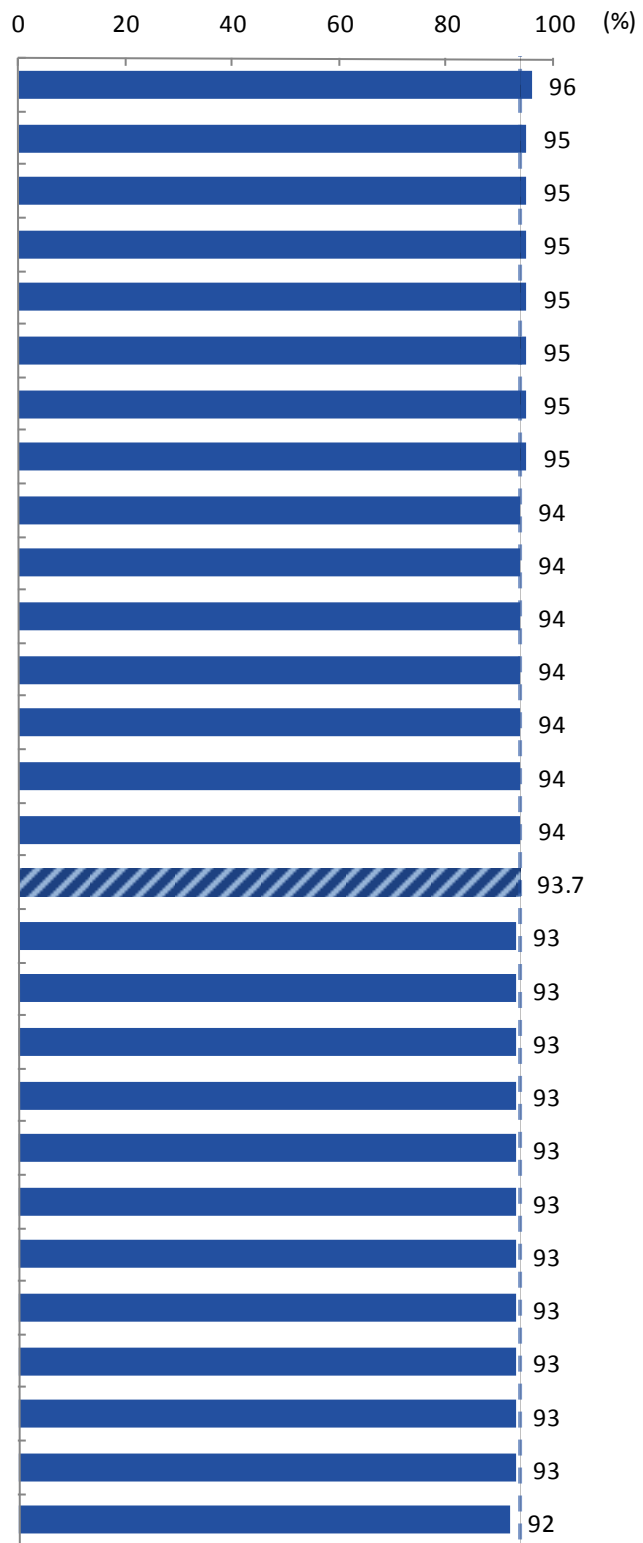
3.





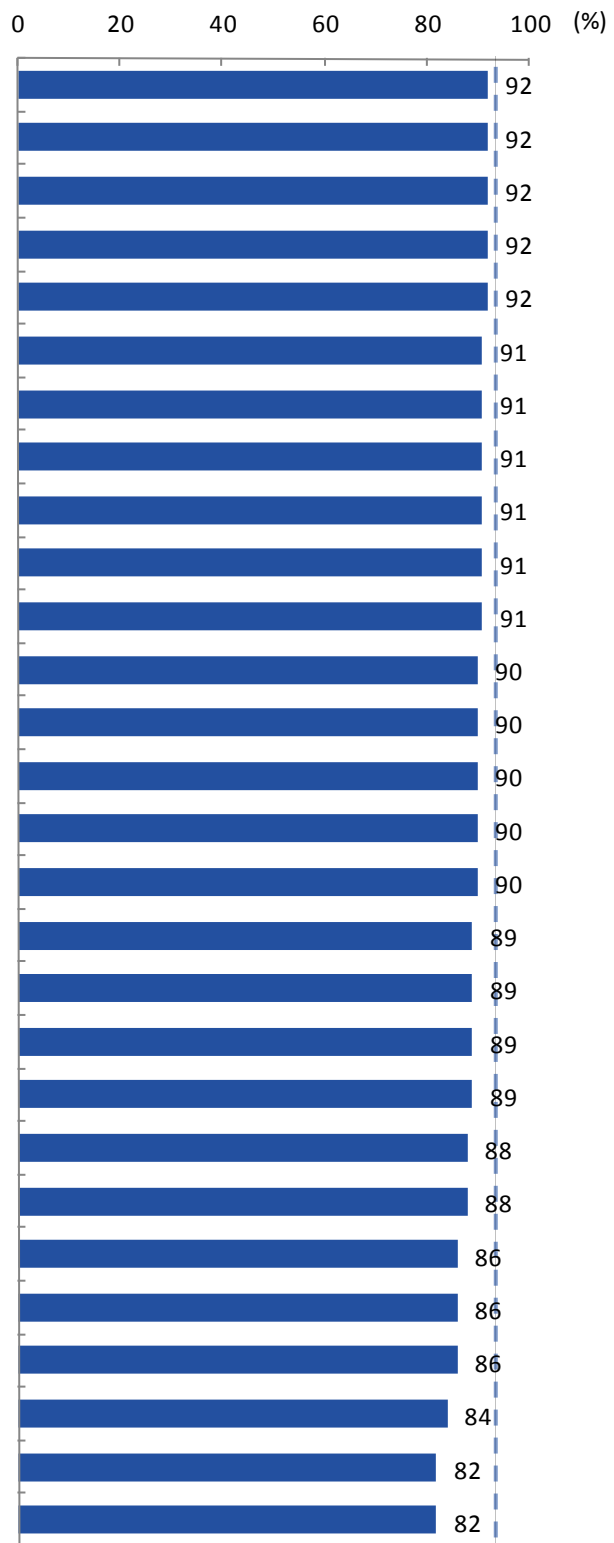
1-3

2015



1-3

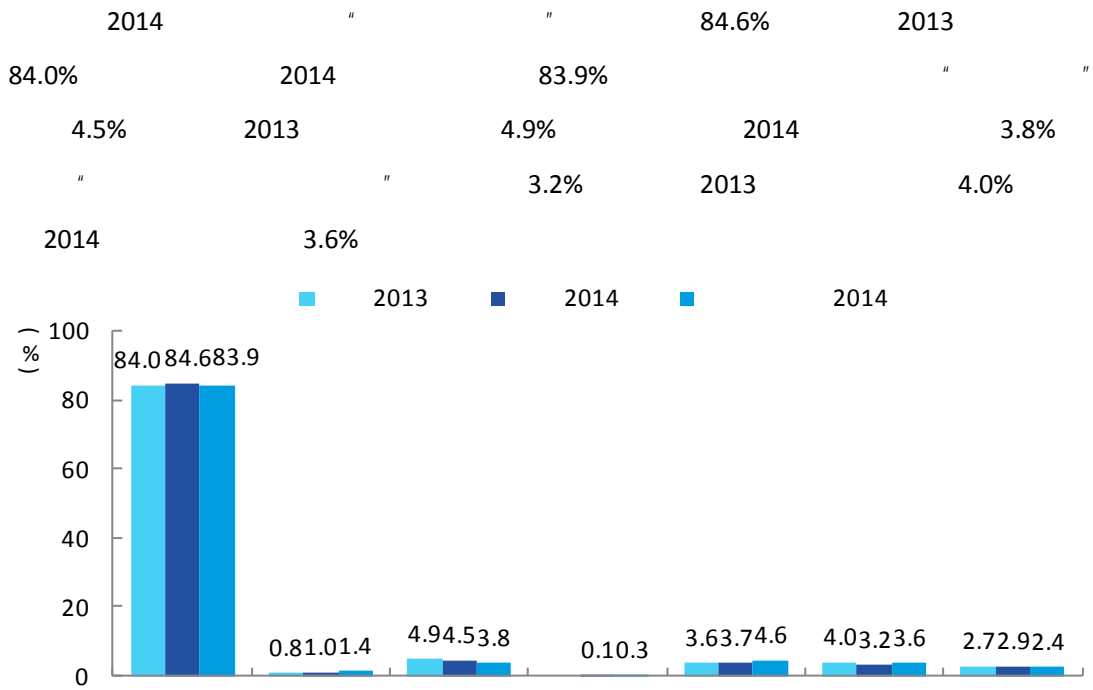
2015



1-3

2015

1.



1-4

1 2013 2014

2 2014

3 100%

2015

2.

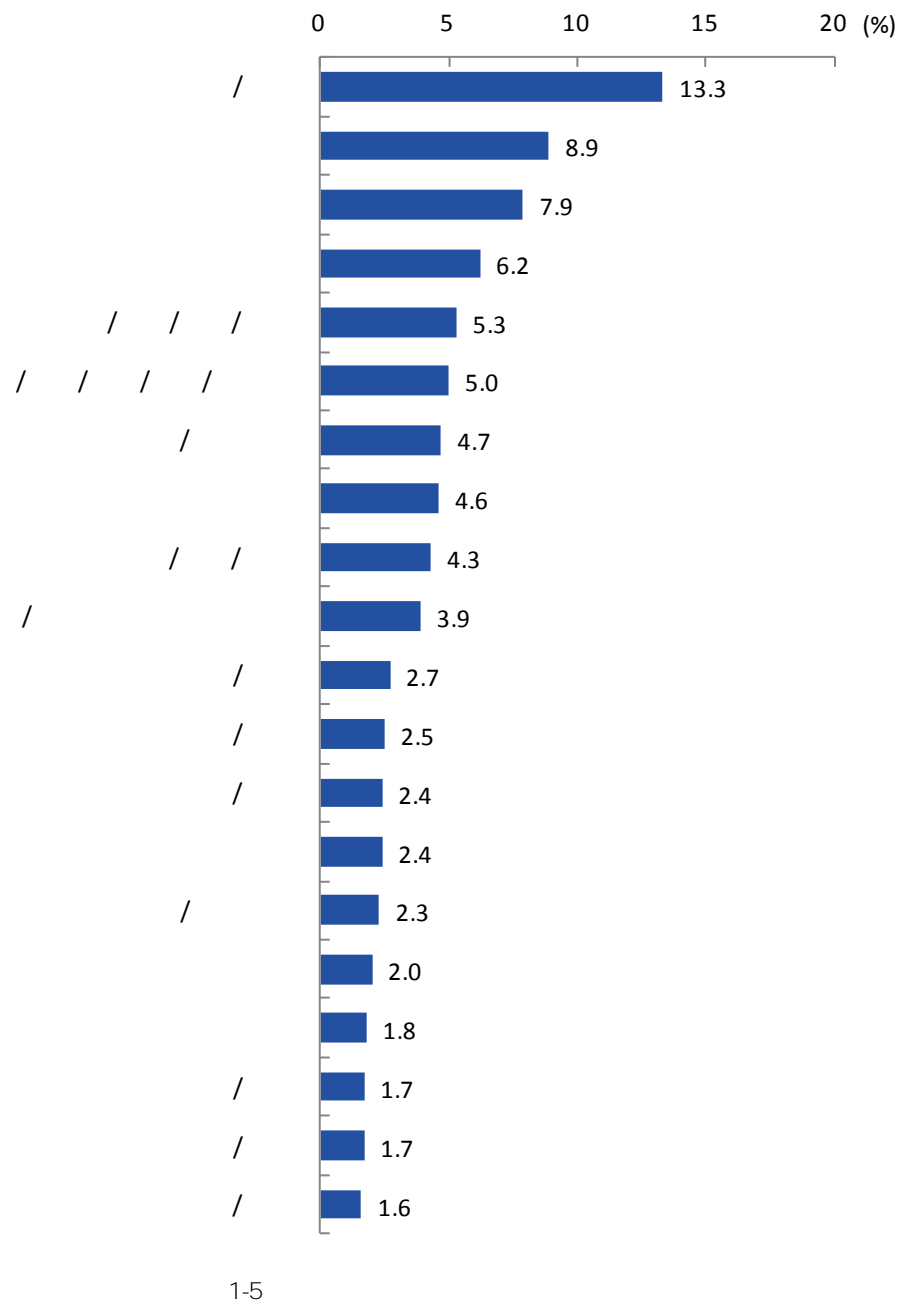
2014

	1-4	10	
	%		
/	13.3	3703	2791
	8.9	4336	3567
	7.9	4188	3259
	6.2	4905	3653
/ / /	5.3	3970	2806
/ / / / /	5.0	5038	4031
/	4.7	3951	3156
	4.6	4915	3489
/ /	4.3	4357	3104
/	3.9	4338	3526

2014

-

2015



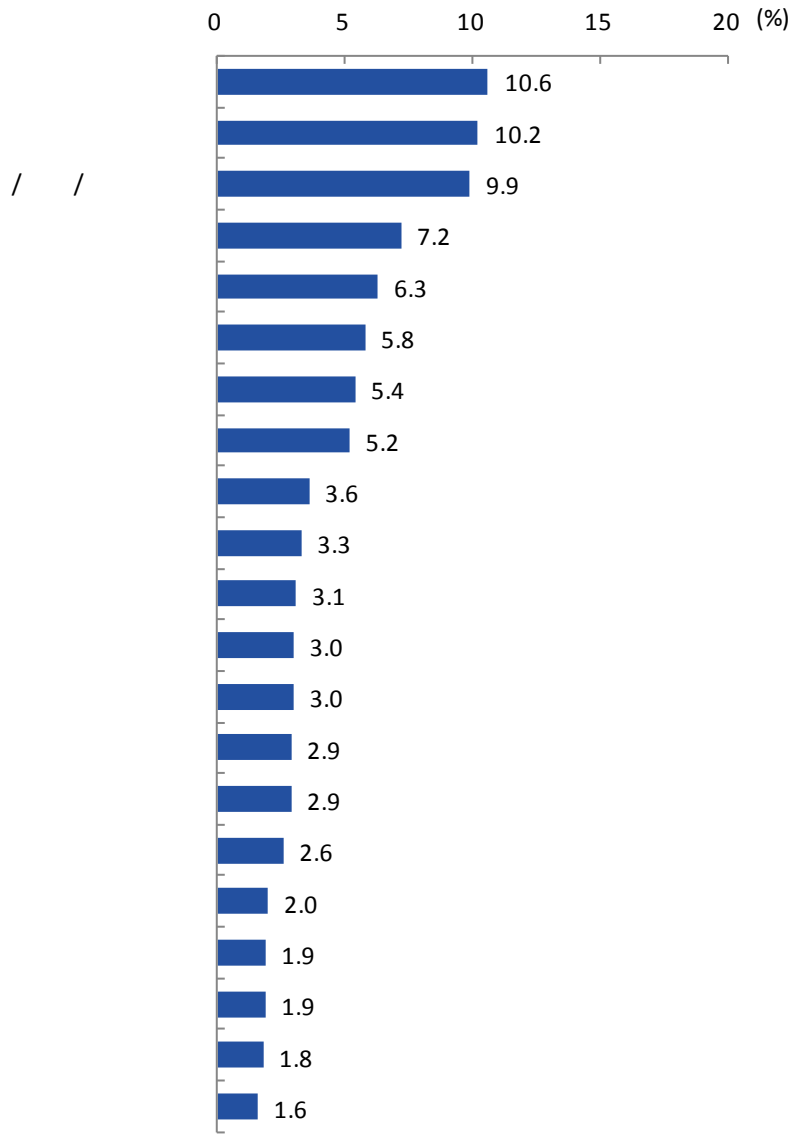
1.5%
-

2015

3.

2014

	1-5	8	
	%		
	10.6	4745	3487
	10.2	4204	3208
/ /	9.9	4753	3731
	7.2	4284	3467
	6.3	4160	3276
	5.8	3701	2795
	5.4	3978	3191
	5.2	4243	3155
2014	-		2015



/ /

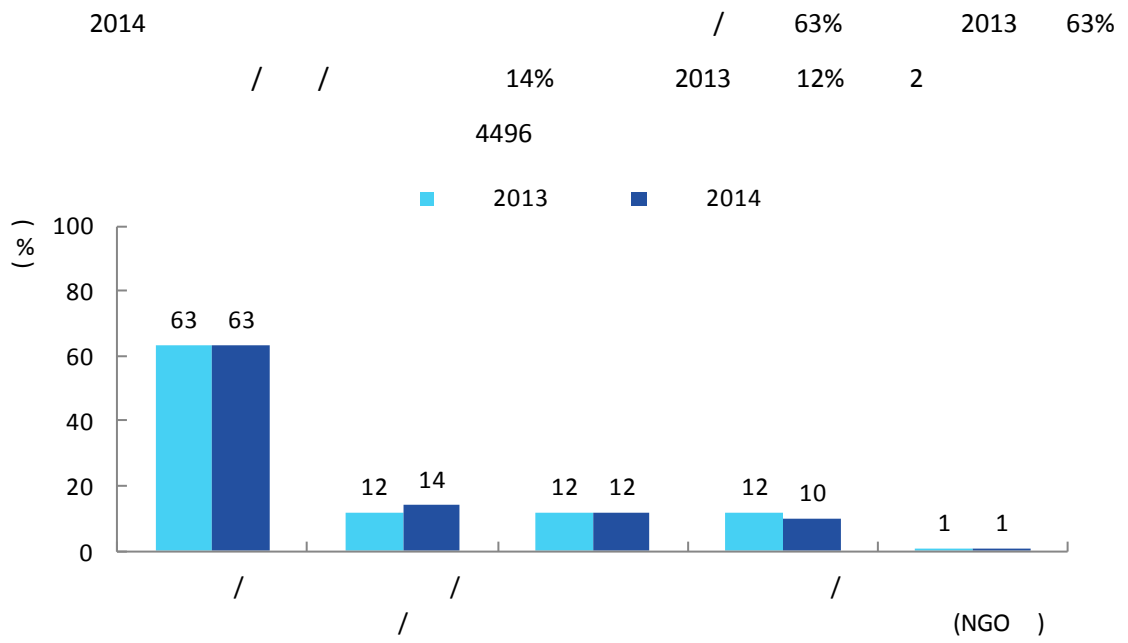
1-6

1.5%

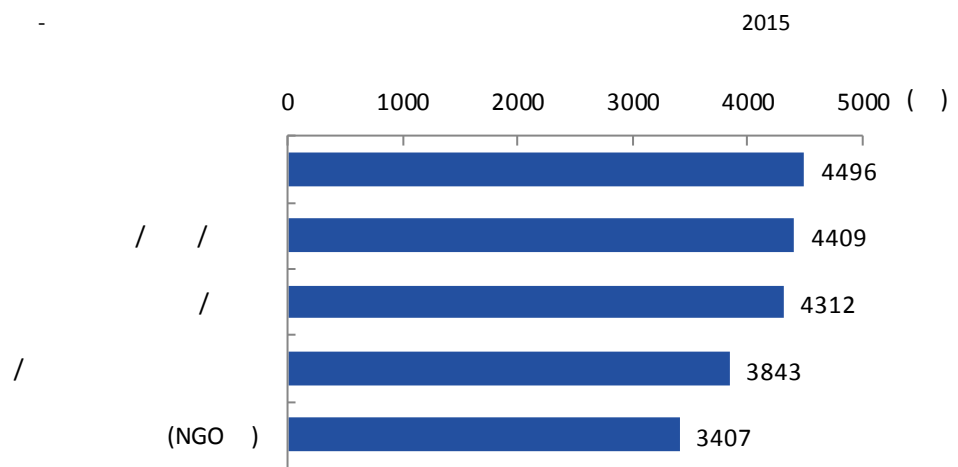
-

2015

4.

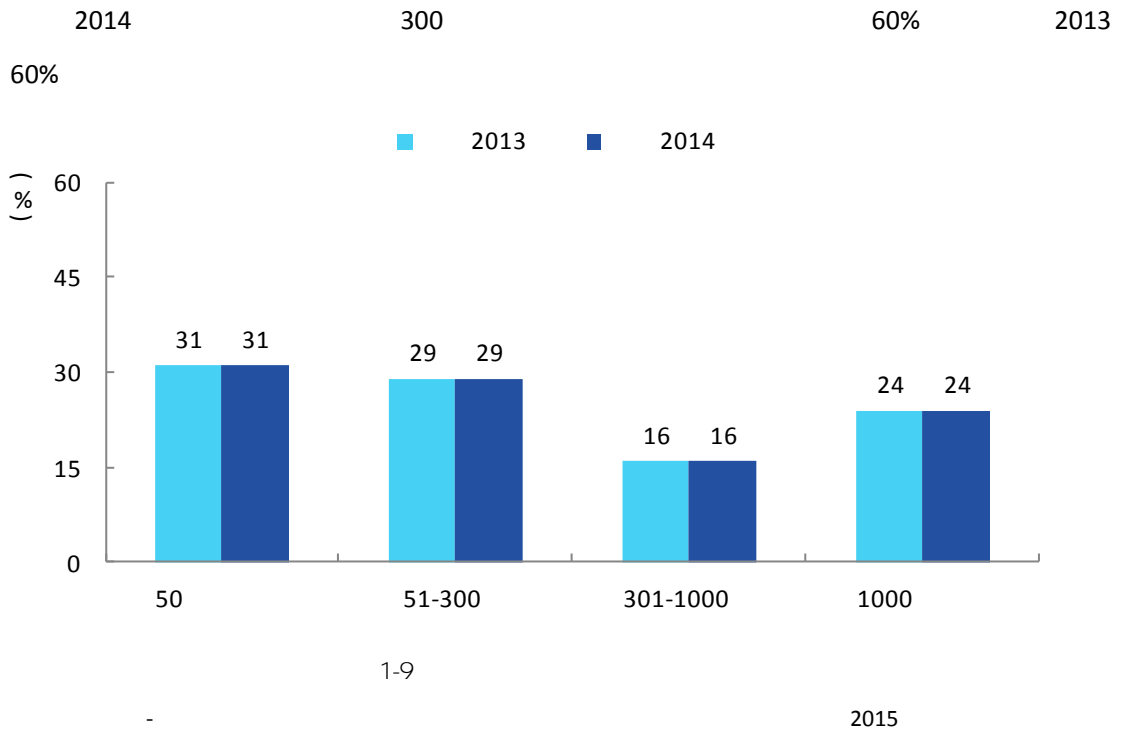


1-7

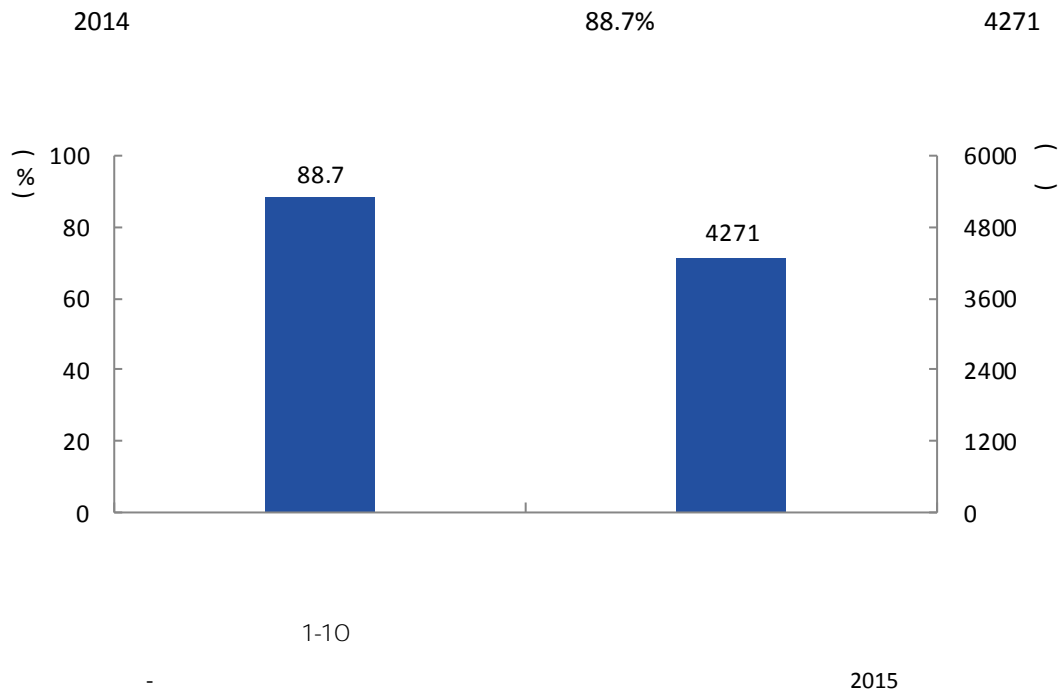


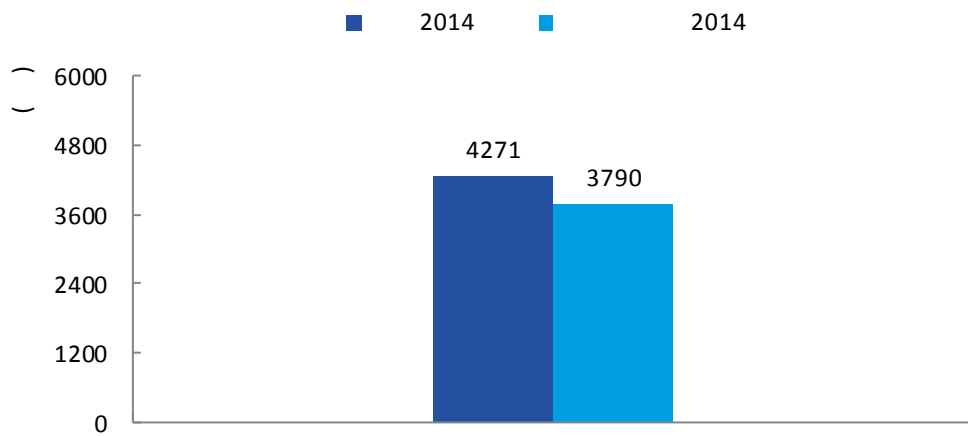
1-8

2015



5.





1-11
 2014 - 2015

1.

26 3 2015 74 9
 3 4 2016 2015 5

2.

" "

2015

2012 2014 91% 92% 92%

		"	"						
								58%	
		30%		27%	3				
12				46%					34%
		68%		"	"				
	68%	61%		"	" "				"
				63%	63%	62%	60%		"
	" "			" "	" "			"	
		63%	62%			"		" "	
	"								
				2015					
	2012	2014		91%	91%	92%			2012 2014
	88%	86%	88%						
						2012	2014	79%	85% 84%
	2012	2014		77%	83%	83%			"
				"	"	"			
								1851	
400							8		
				10		22			
						Cisco			
PLC						CCIE			OCM
		HCIE				RHCA			
3.									
2015	5	27				"	"	"	8
		29		100		48		35	
	5		18				4		2

2015

3

"

" 7 "

" 10

" +"

5

412

6

150

4. "

"

"

"

2014—2015

1.

1.

	“2015	”	15	
143	2000	15000		2.9
	90%	7.3%	600	

6

2015

13

2.

2015

3.

3T

“	”	“	”
“	”	“	”
	10	14	2015

4.

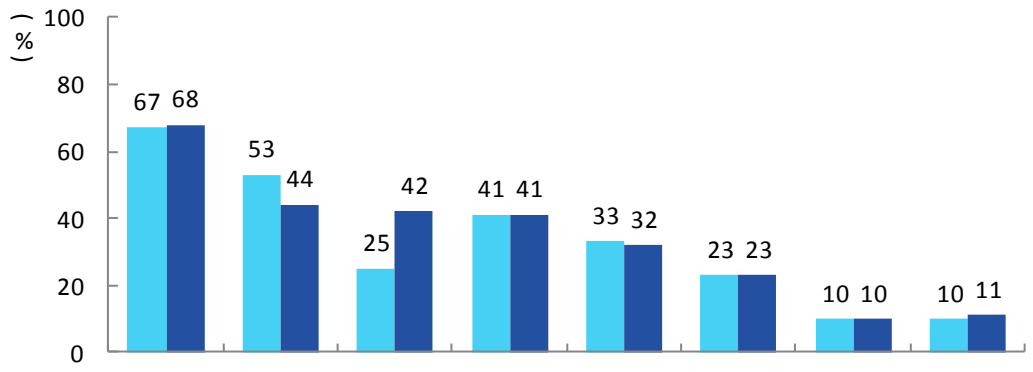
“ ”

“

“		28	63	“
	2015			
1500 /	38		57000	

2.

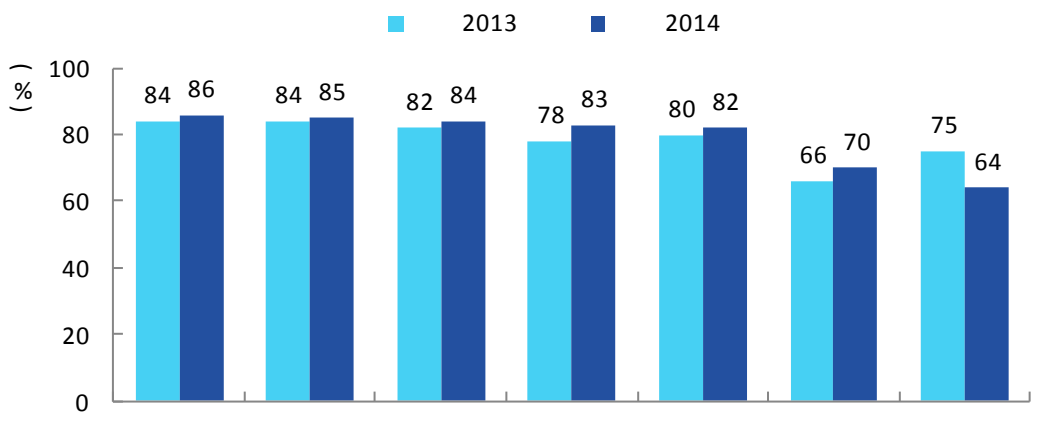
2014 " " 68%
 70% " " 10% 86% "
 " 11% 2013 10%
 ■ 2013 ■ 2014



2-1

%

2015

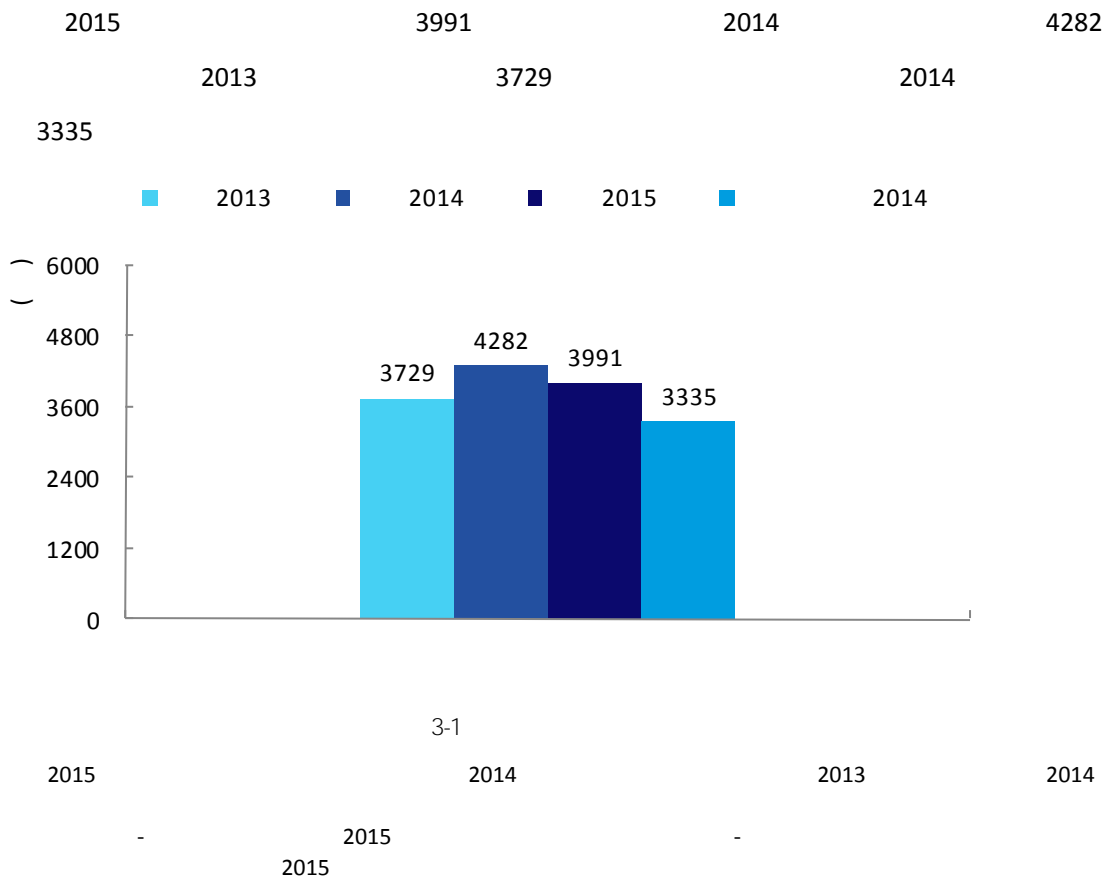


2-2

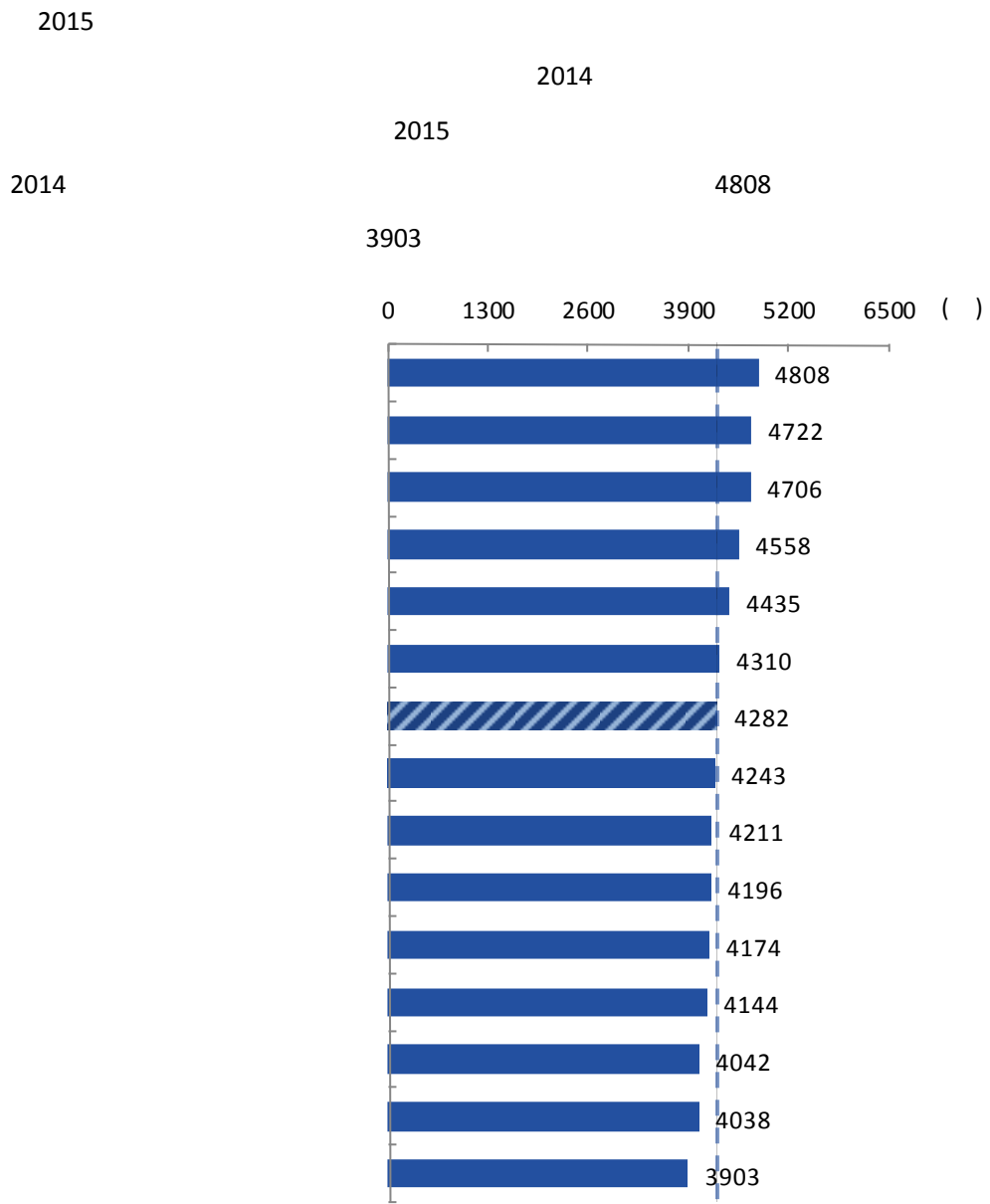
%

2015

1.

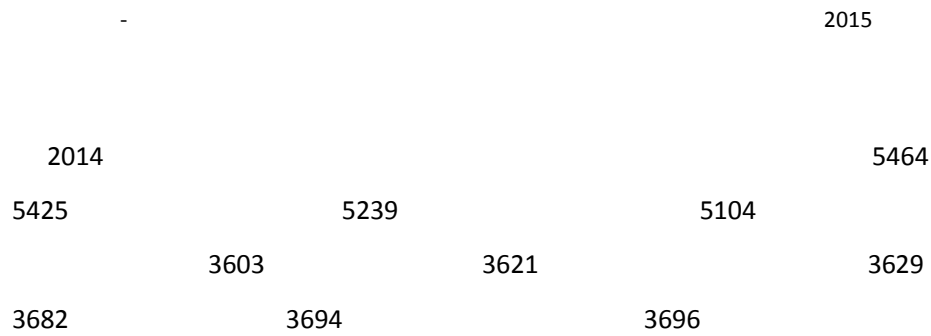


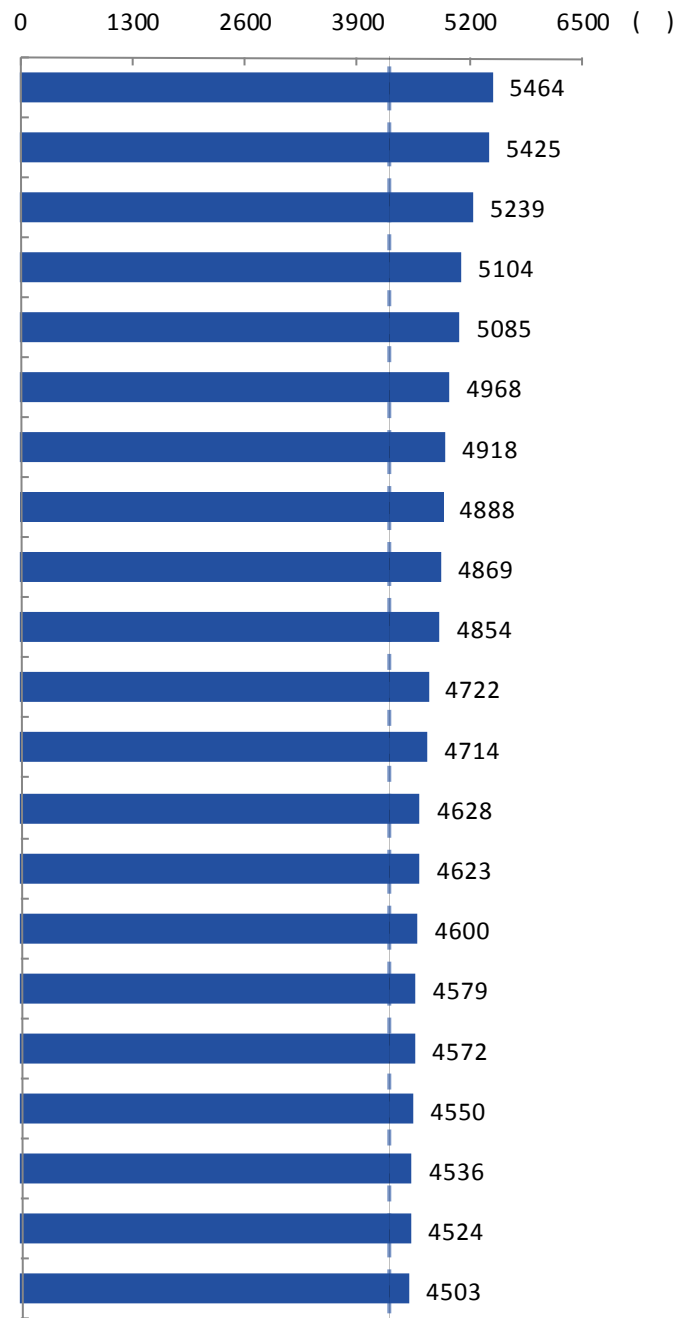
2.



3-2

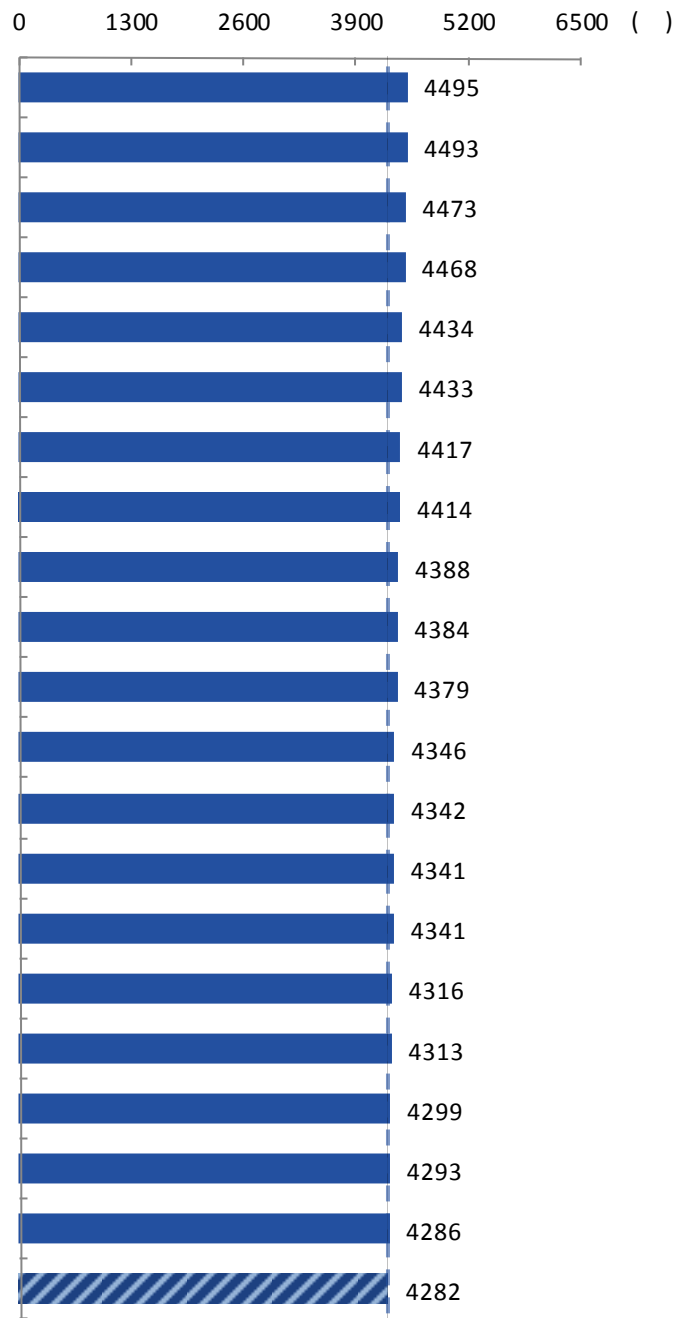
3.





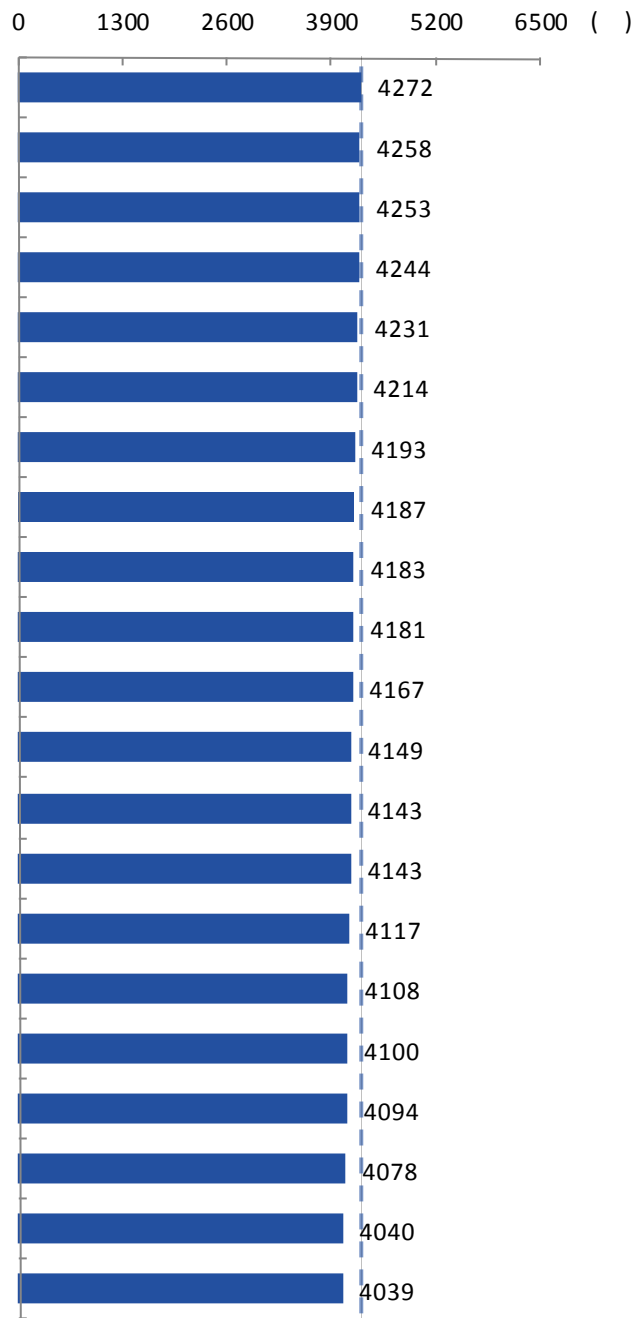
3-3

2015



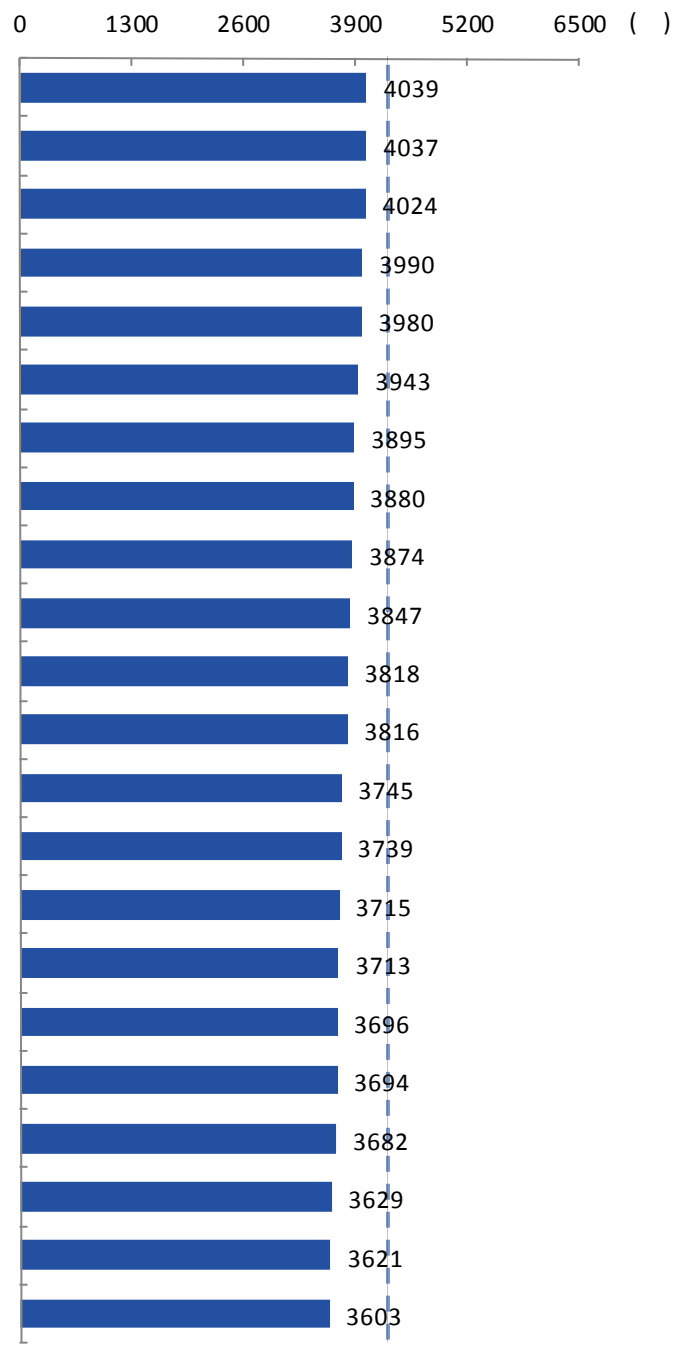
3-3

2015



3-3

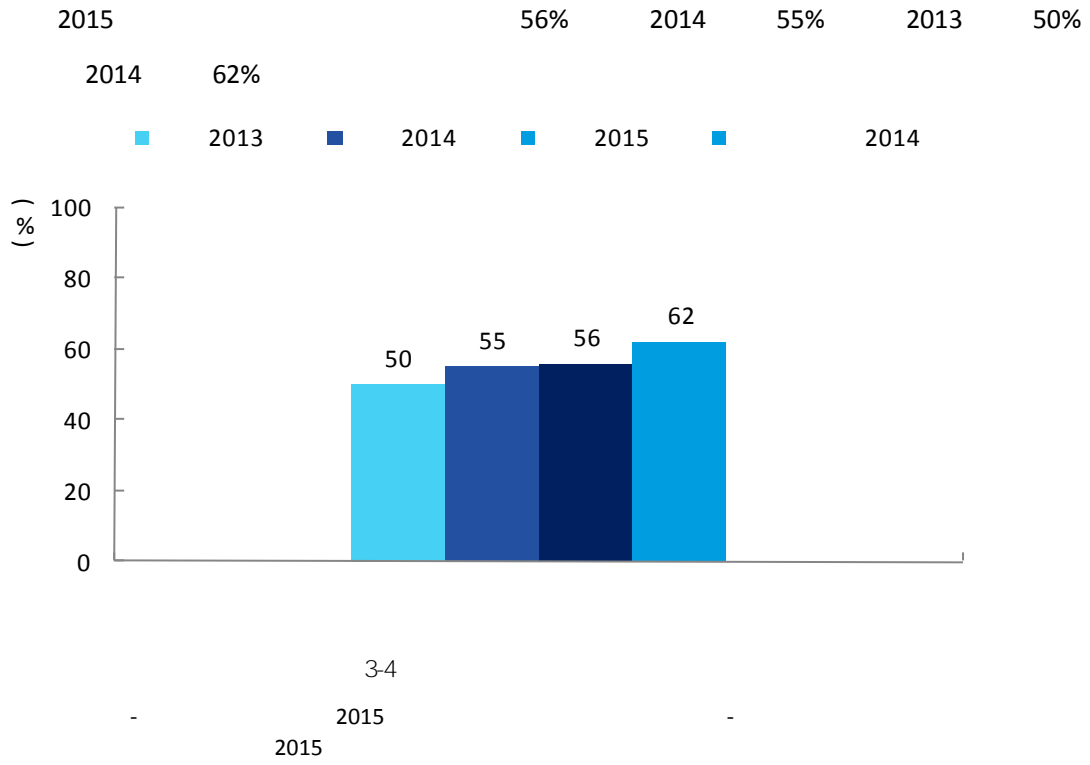
2015



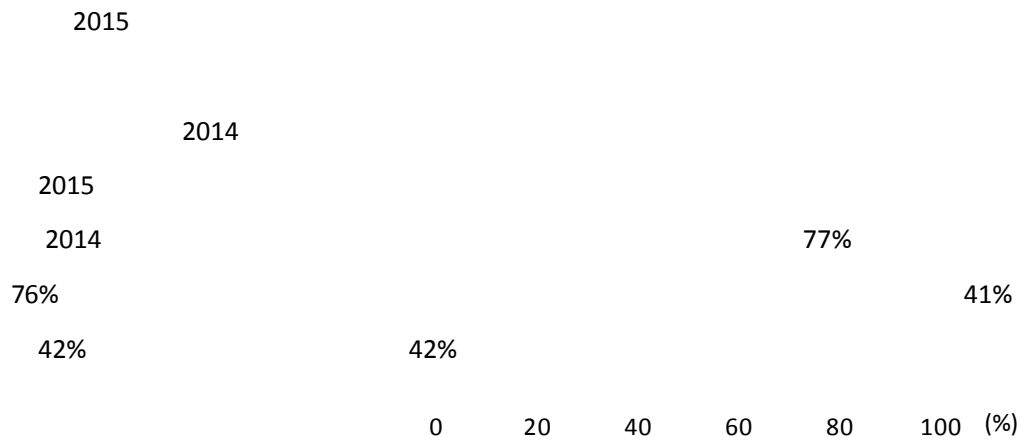
3-3

2015

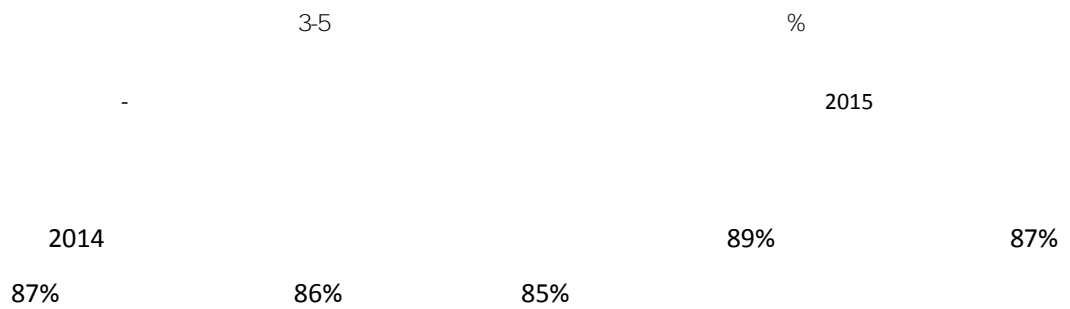
1.



2.



3.



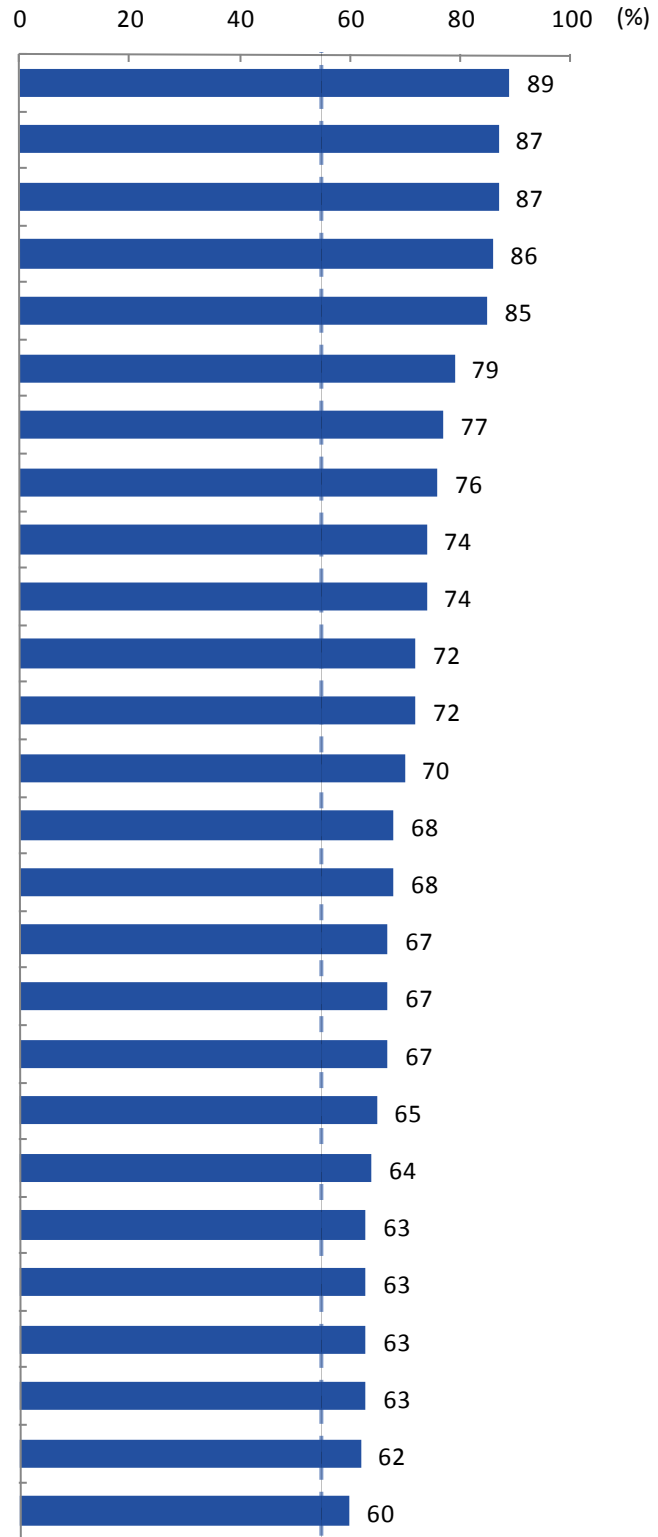
19%

23%

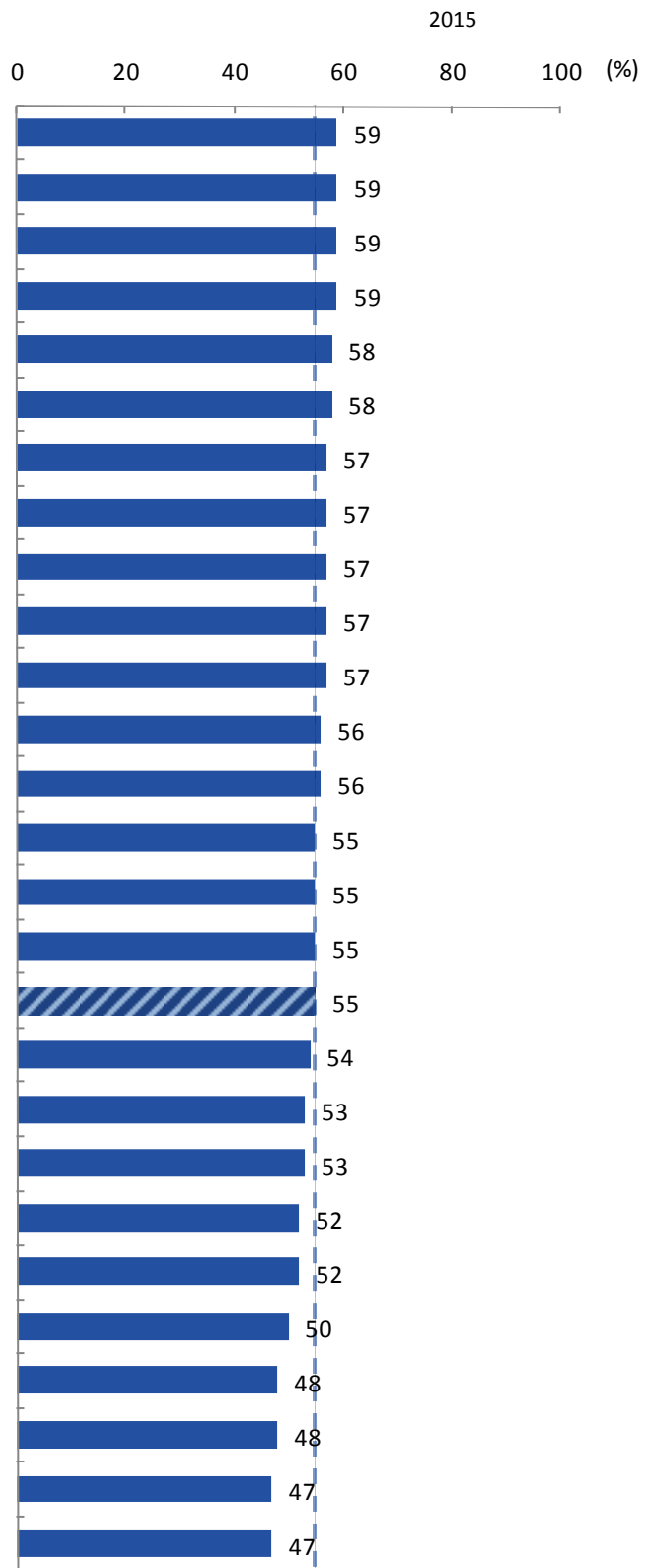
25%

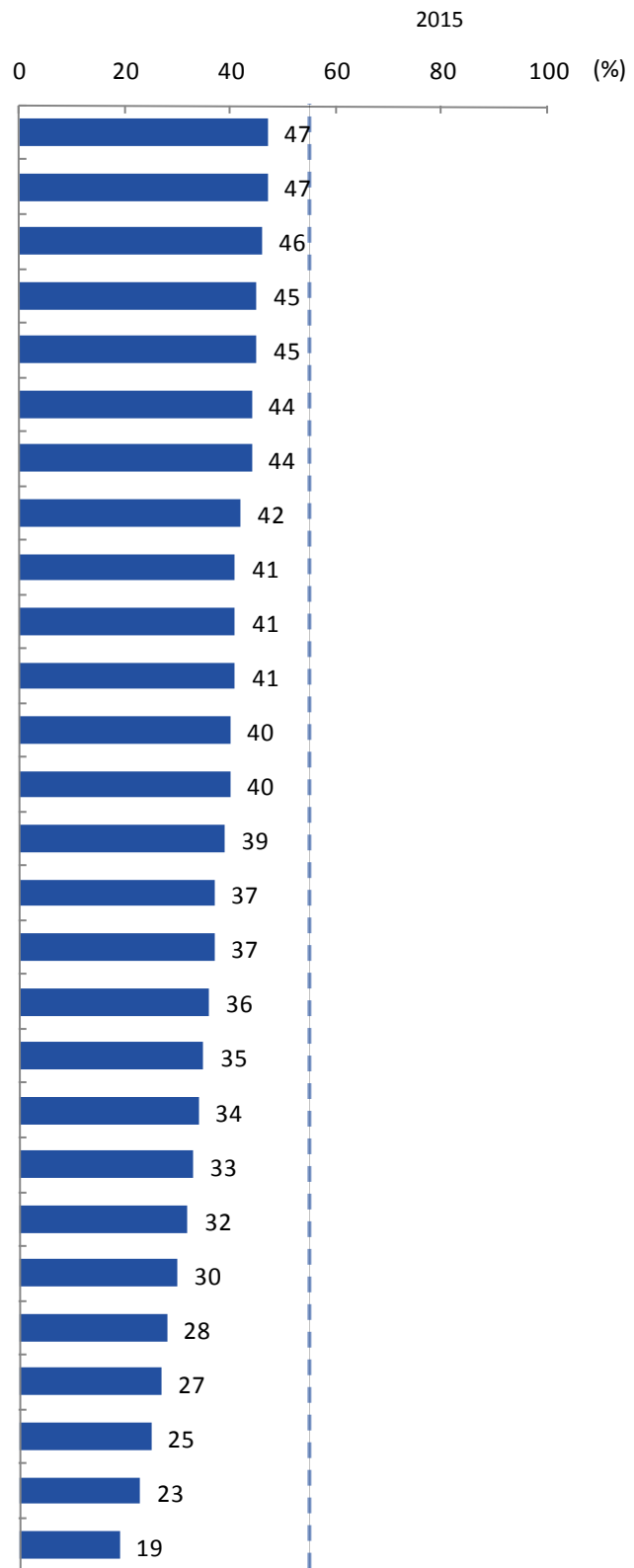
27%

28%

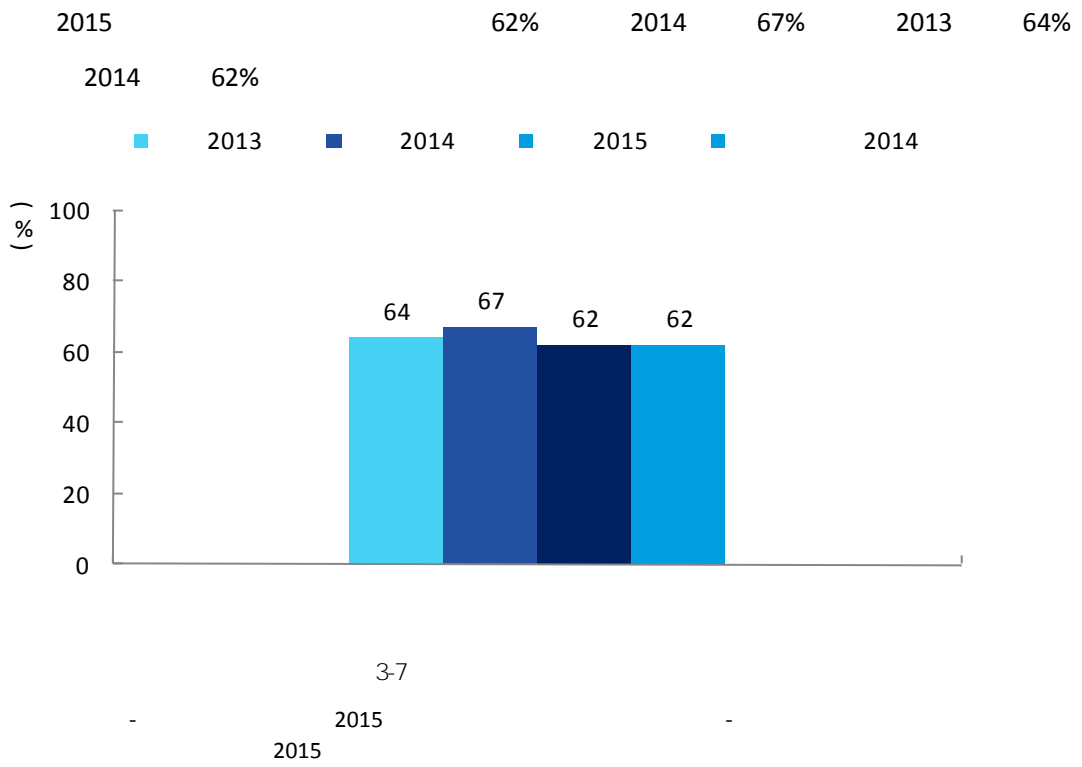


3-6

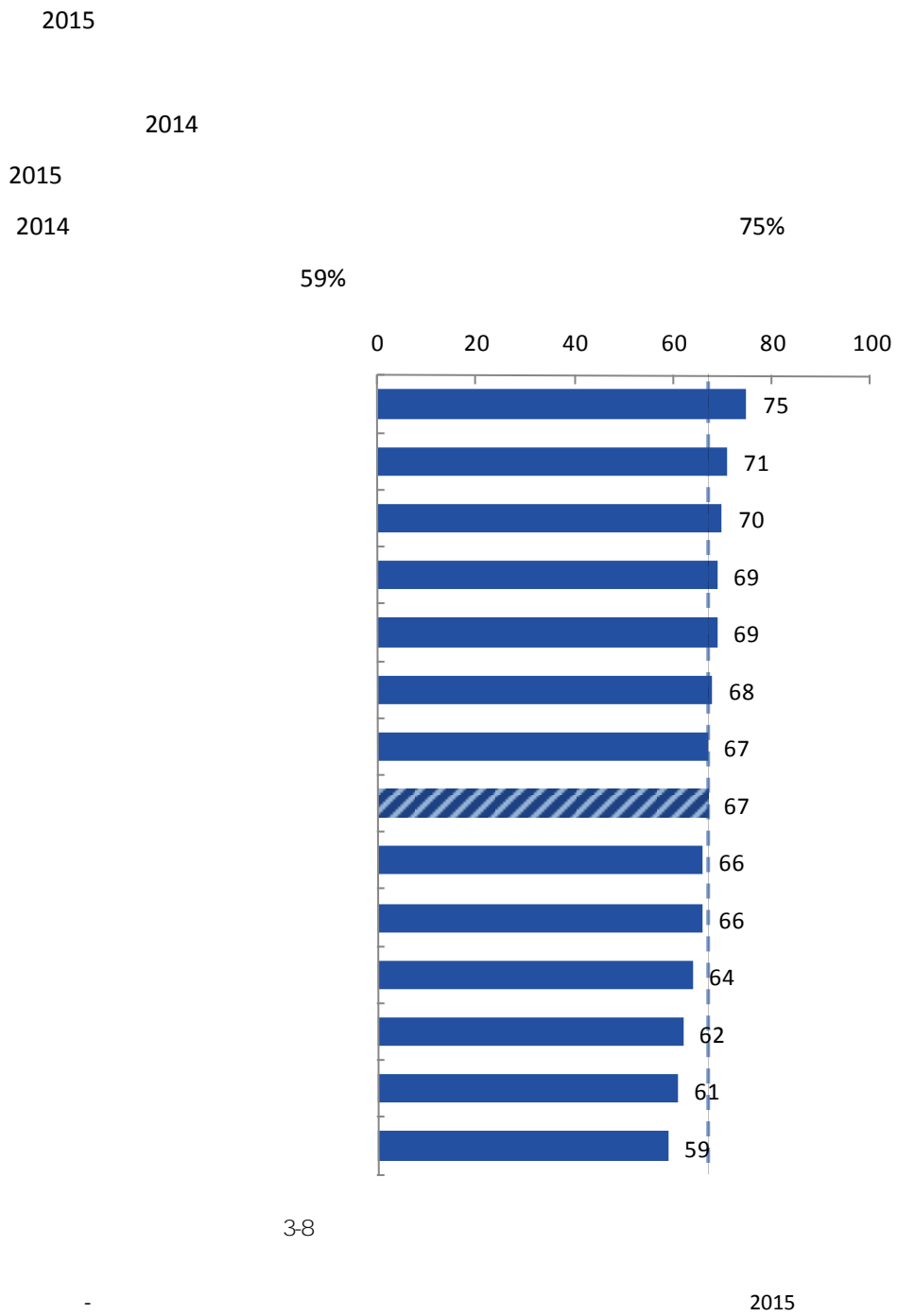




1.

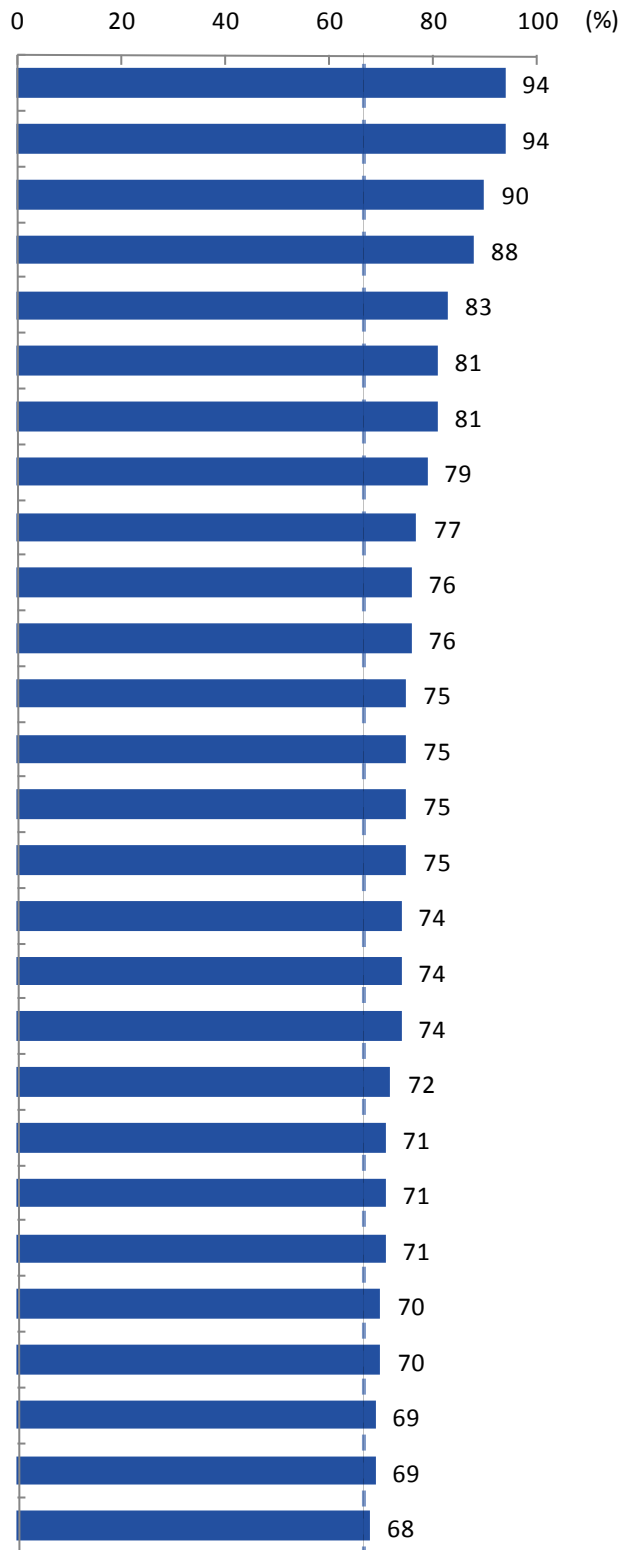


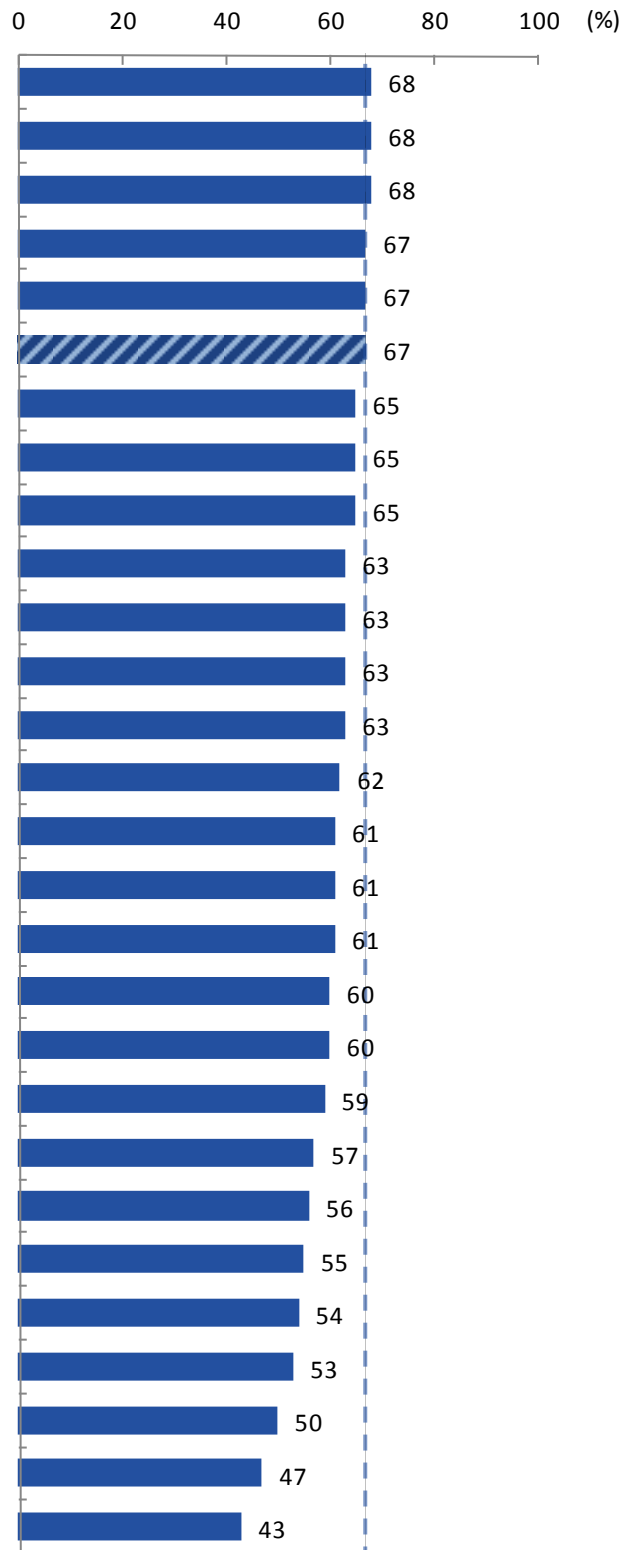
2.



3.

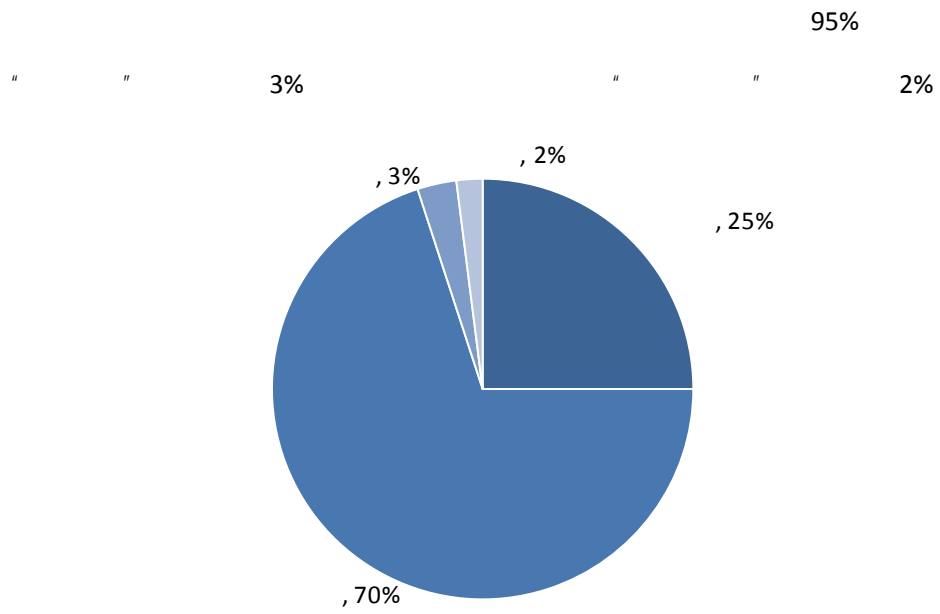






3-9

2015



3-10

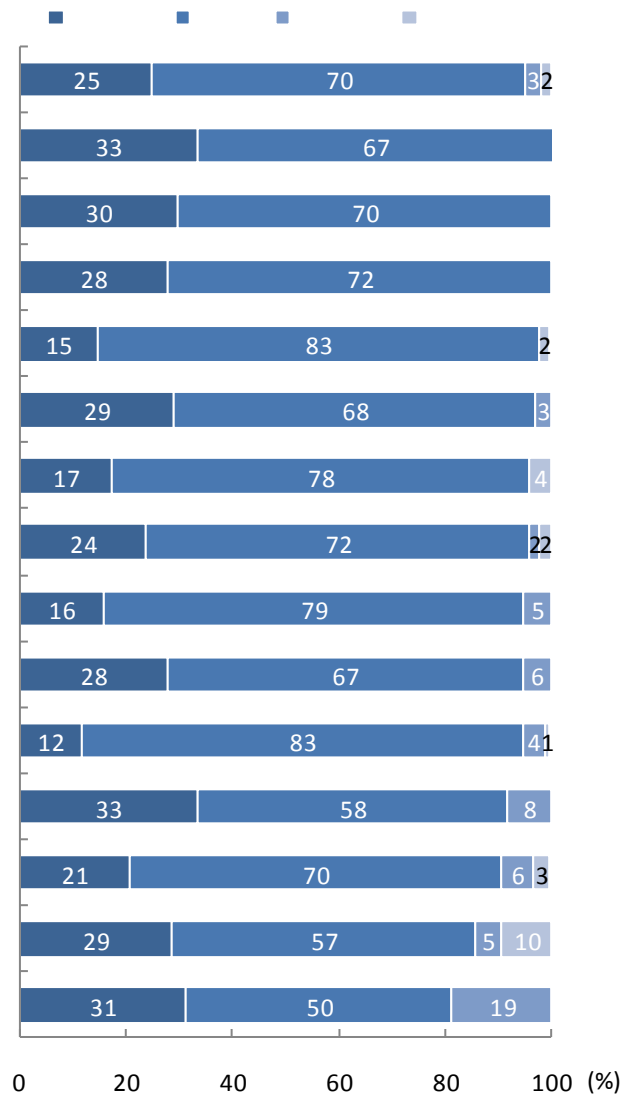
-

2014

100% "

81%

/ /

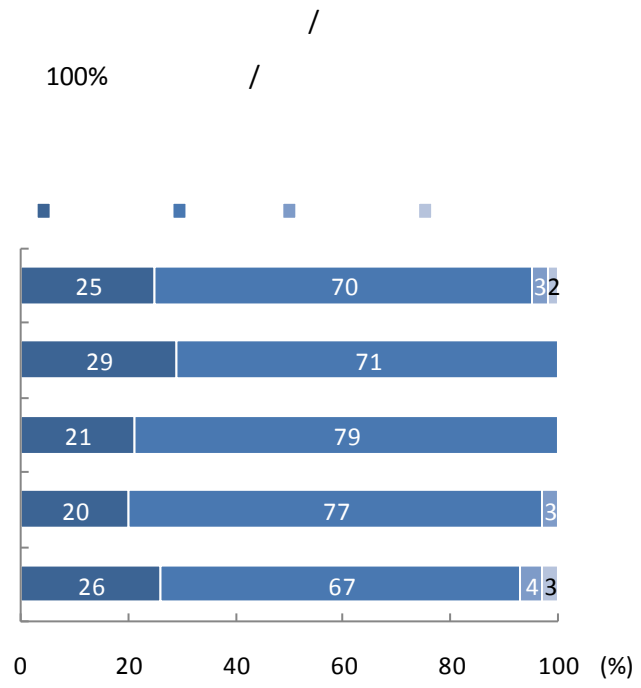


3-11

2014

93%

100%



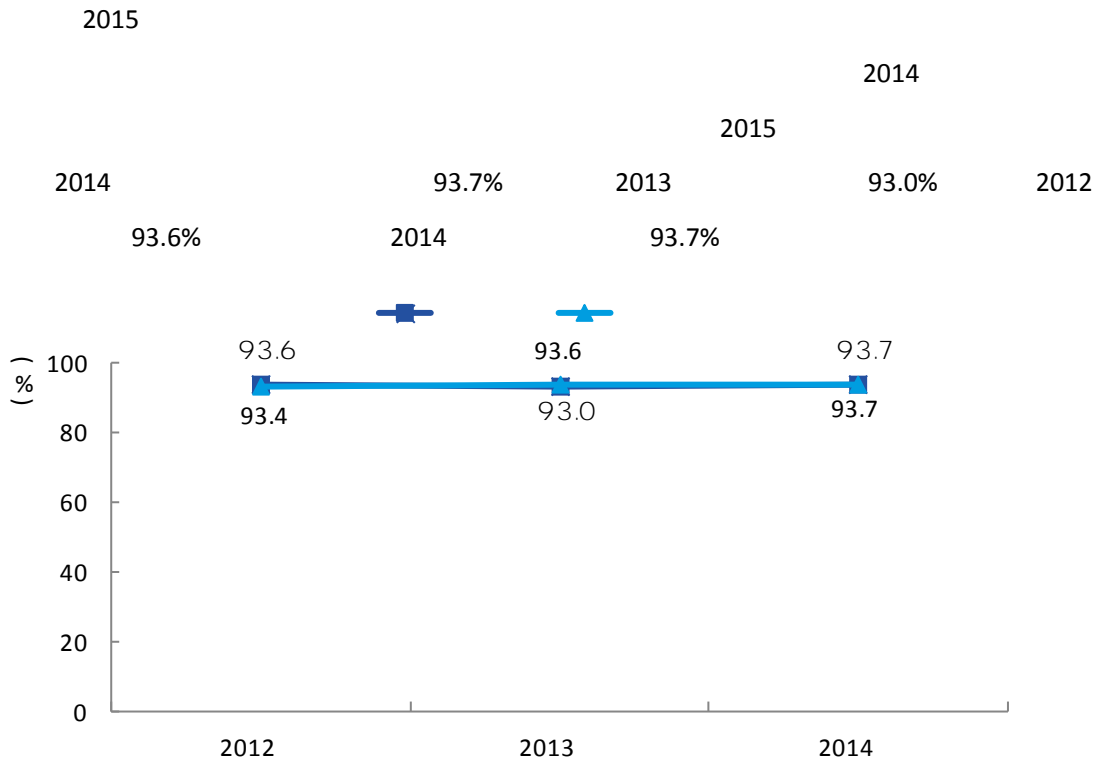
3-12

NGO

-

2014

1.



4-1

1

2

3

2013

2012 ~2014

-

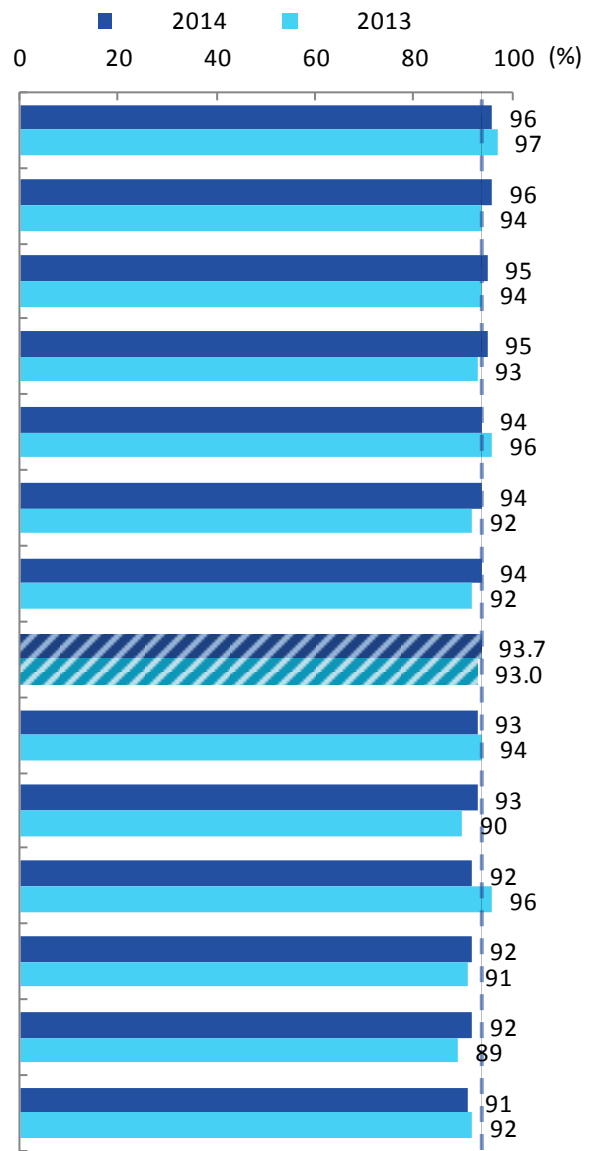
2015

2.

2014
96%

96%

91%



4-2

1

2 2013

2015

3.

2014

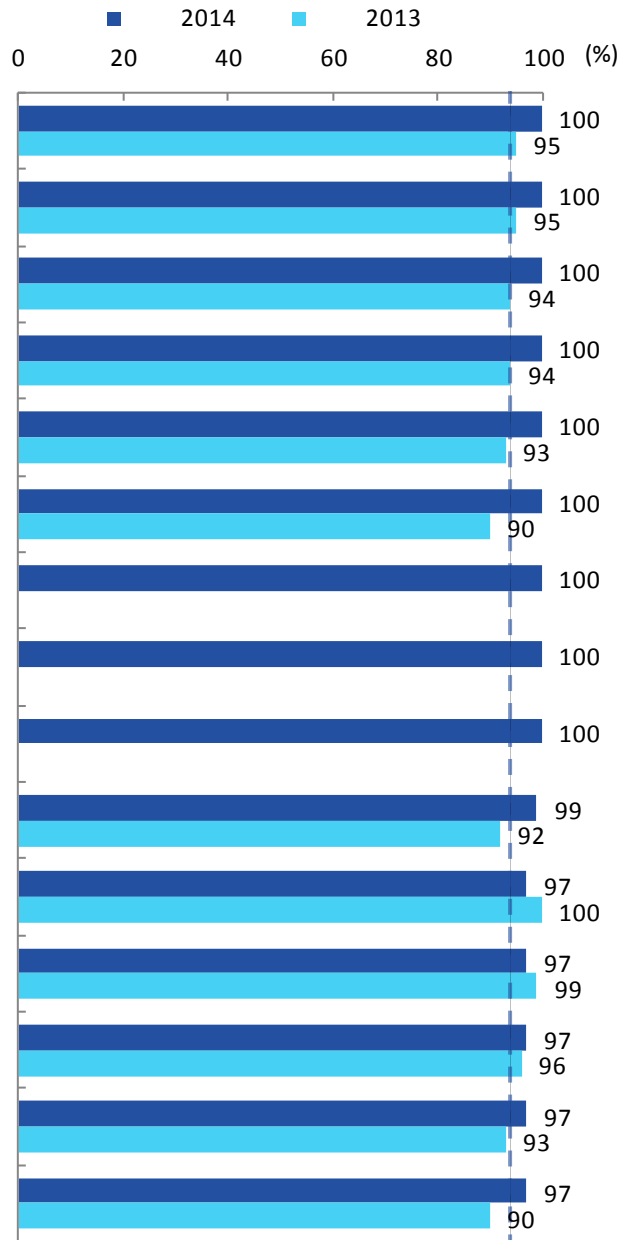
9

82%

100%

82%

84%



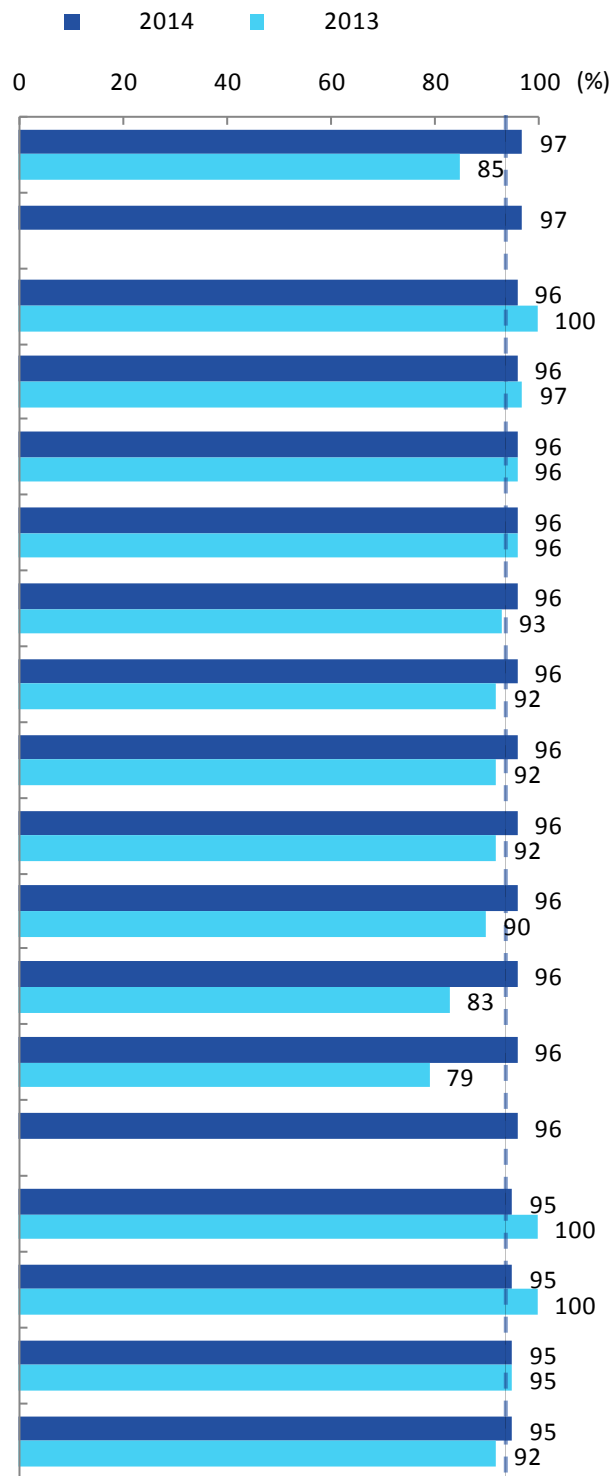
4-3

1

2

2013

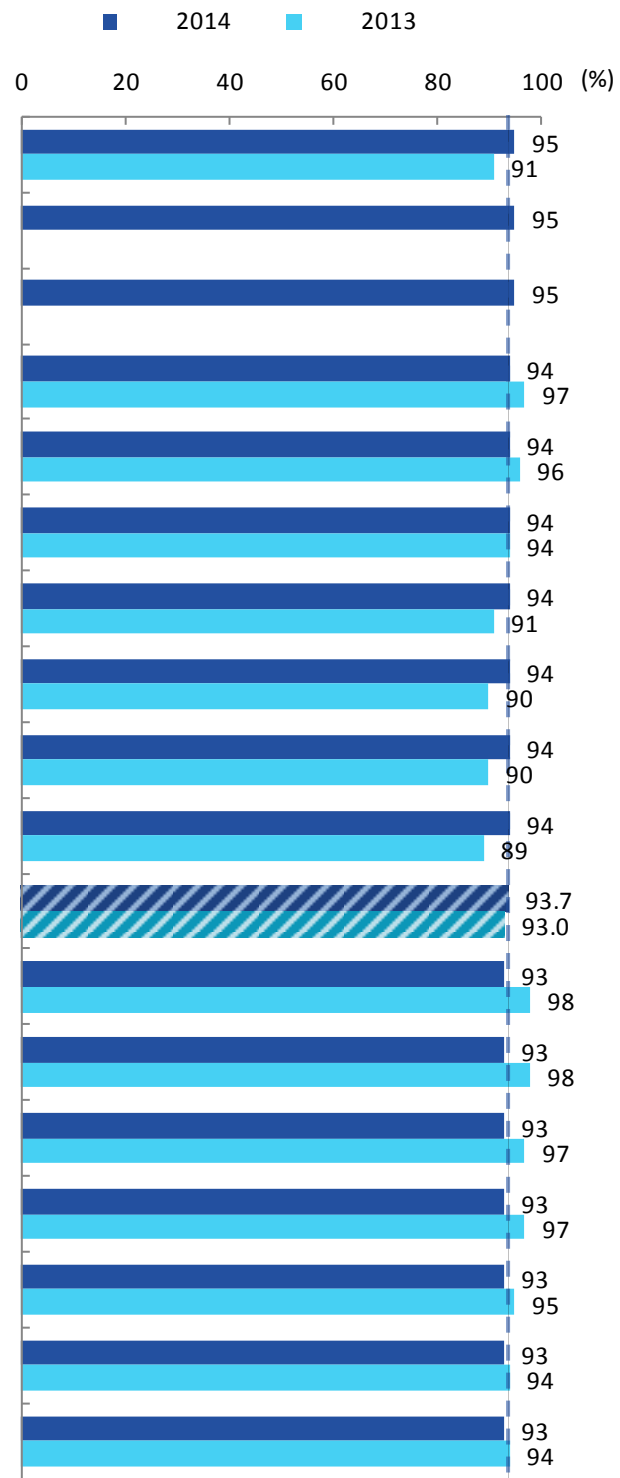
2015



4-3

1
2 2013

2015

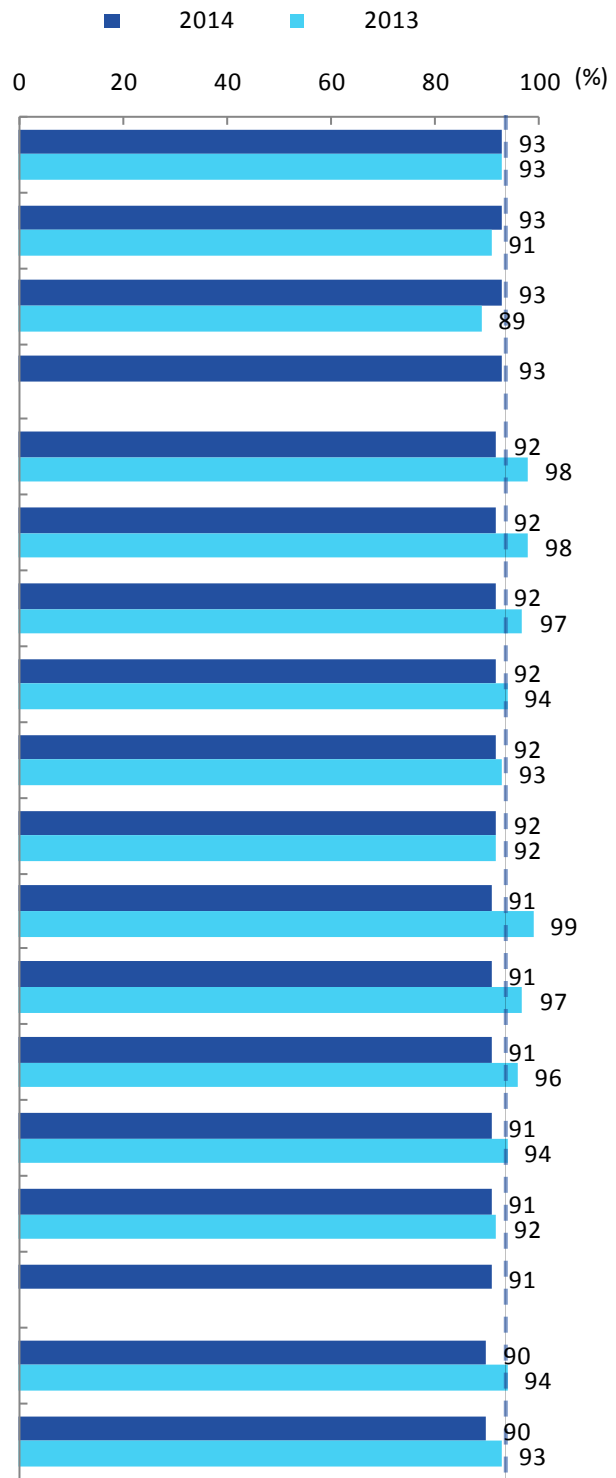


4-3

1

2 2013

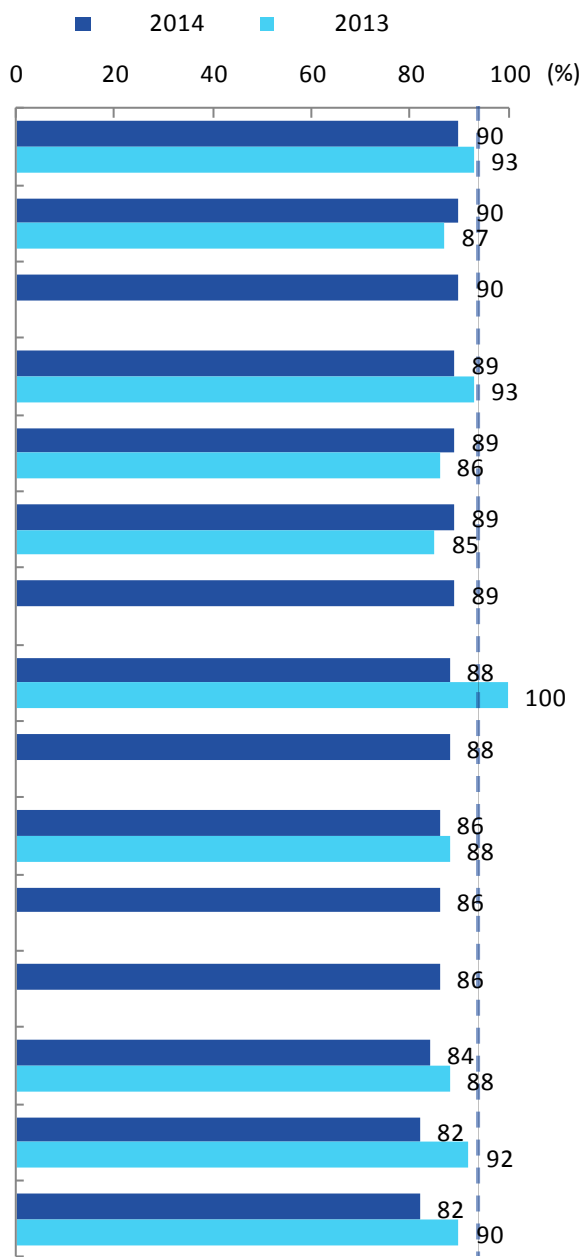
2015



4-3

1
2 2013

2015



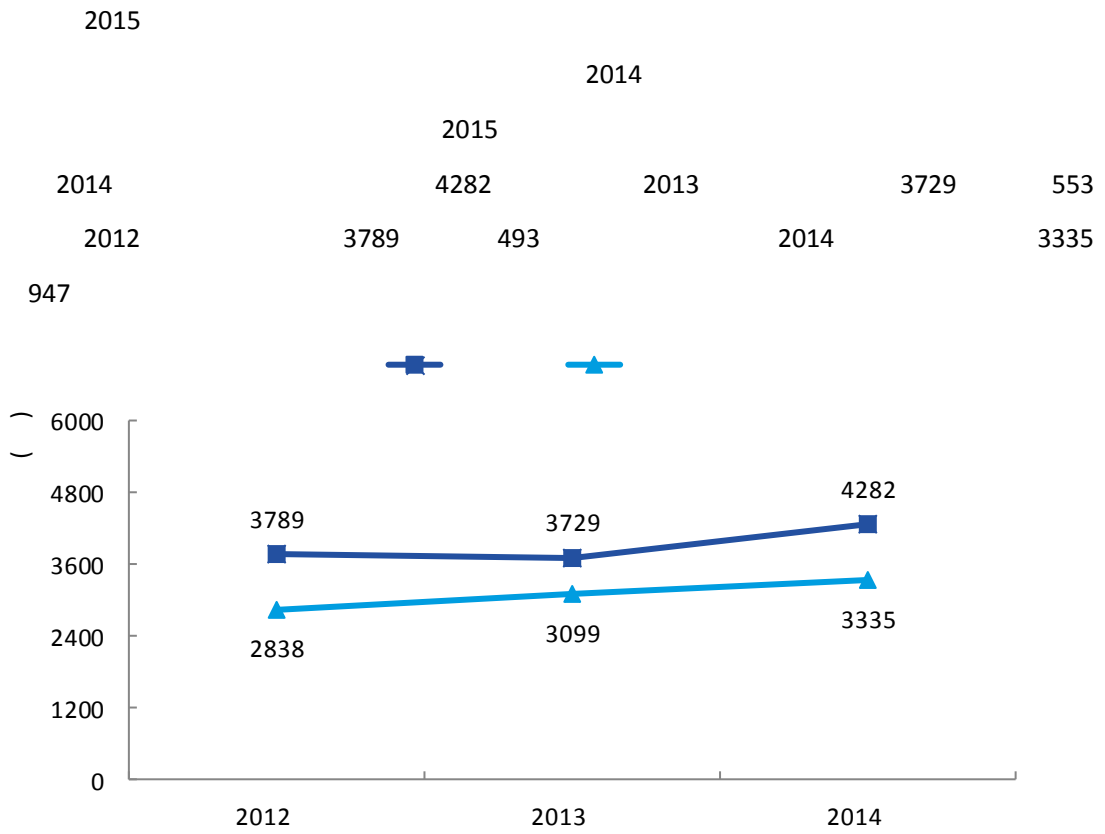
4-3

1

2 2013

2015

1.



4-4

1 2013

2 2012 ~2014

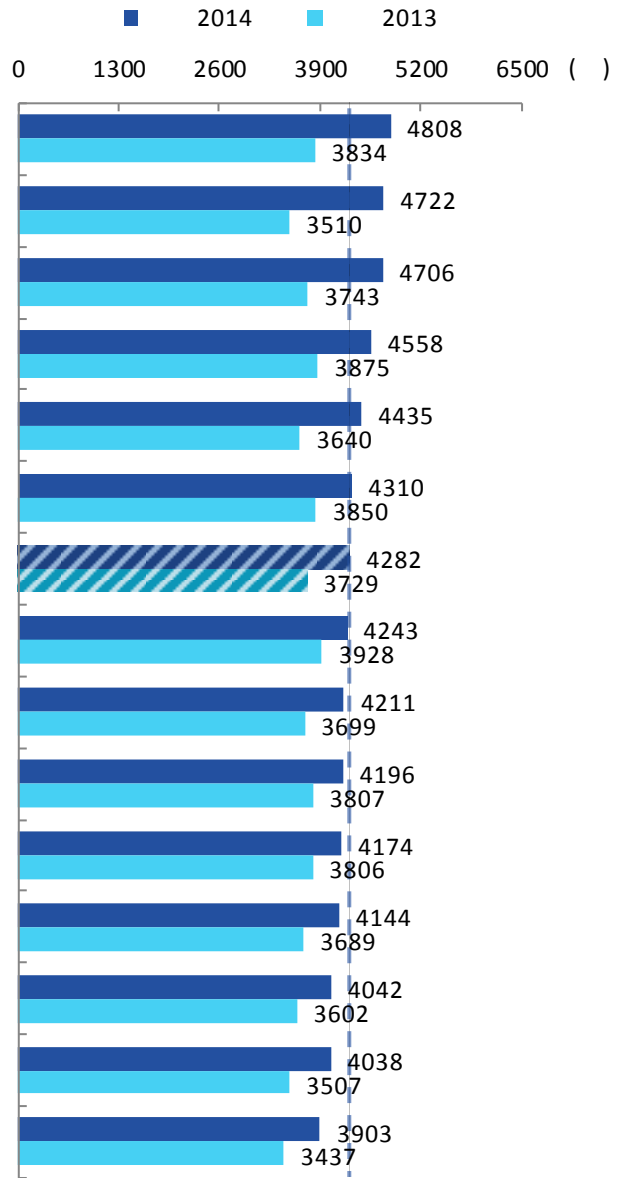
2015

2.

2014

4808

3903



4-5

2013

2015

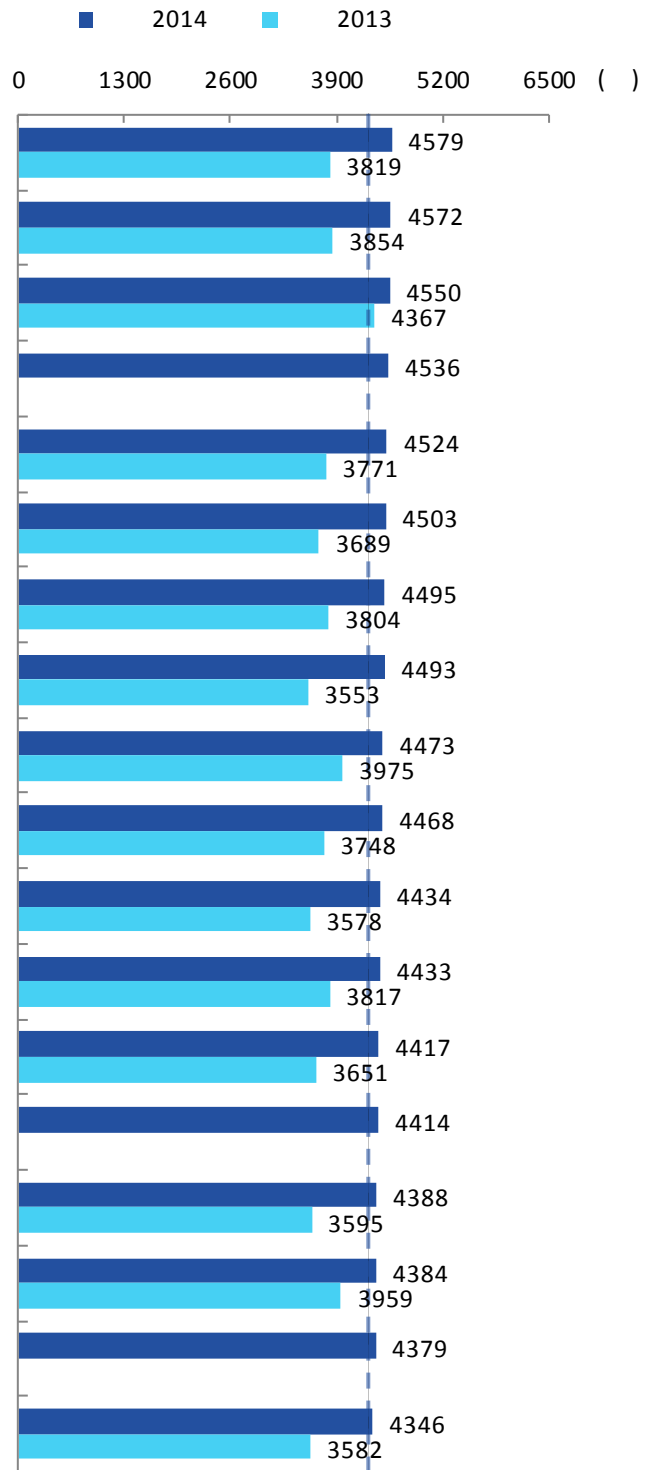
3.

2014

5464

5425

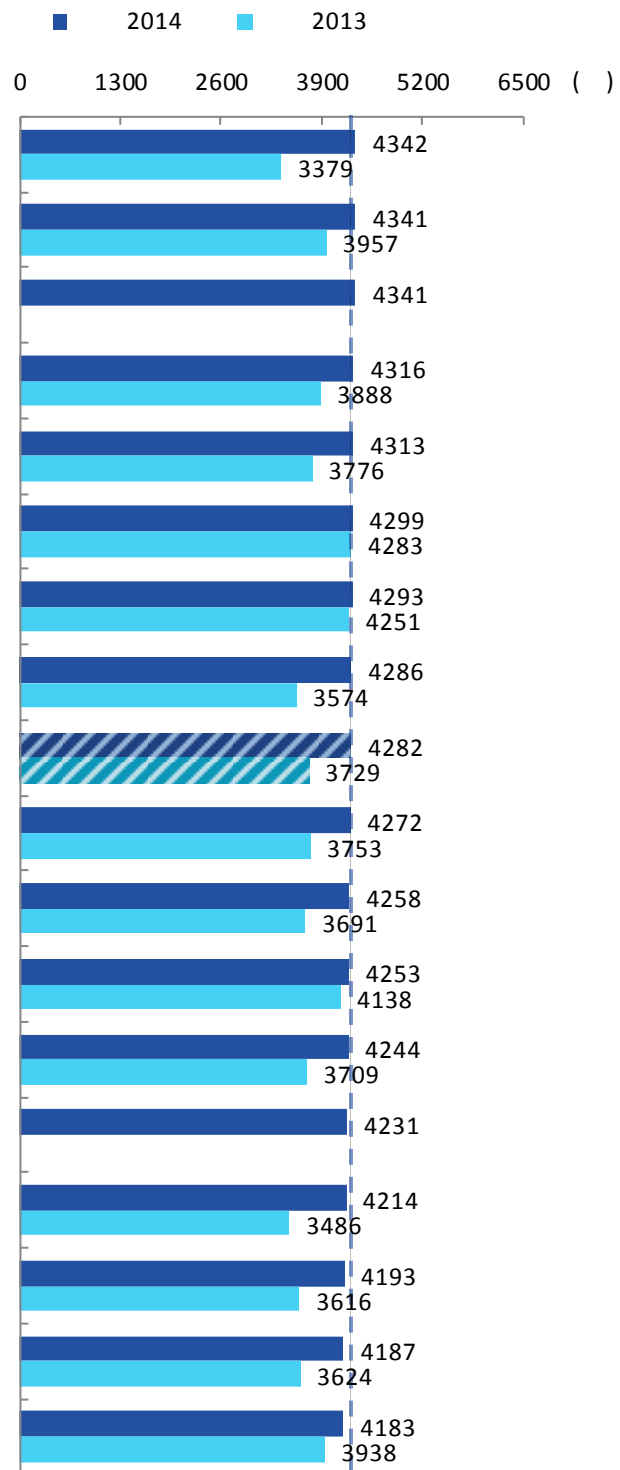
5239



4-6

2013

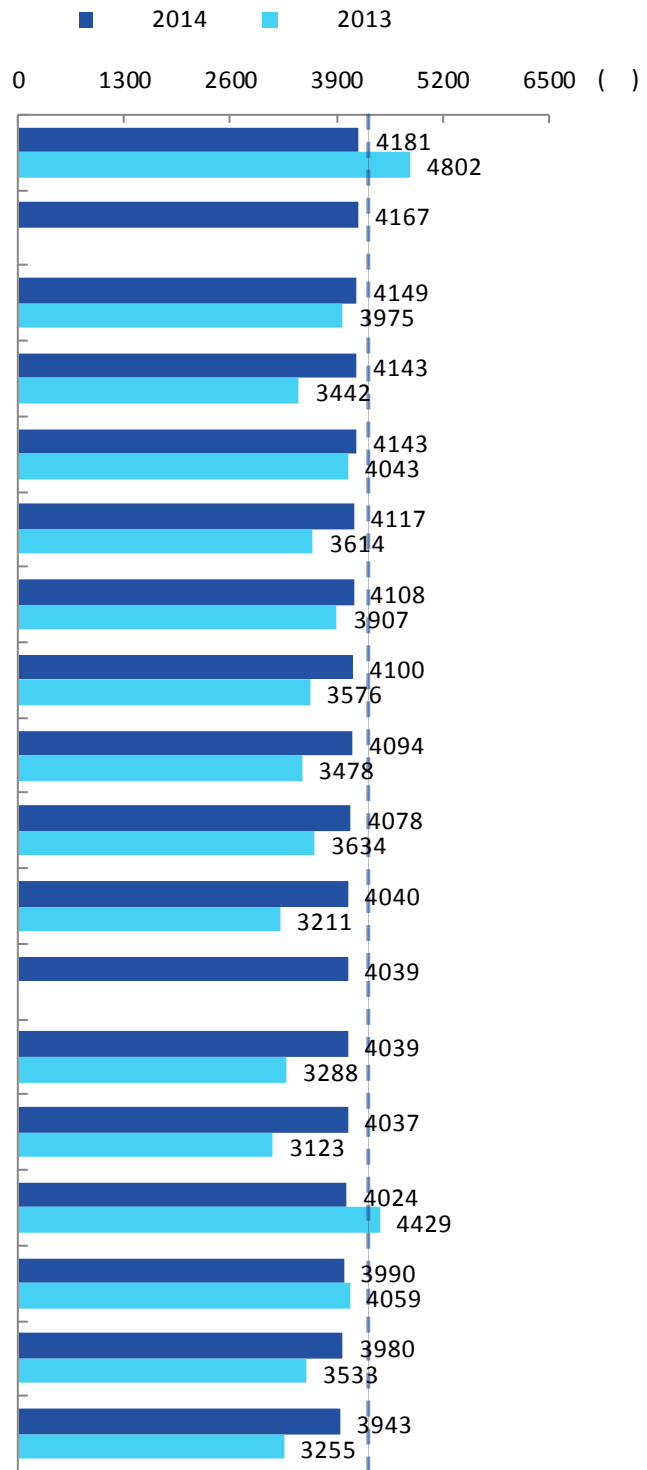
2015



4-6

2013

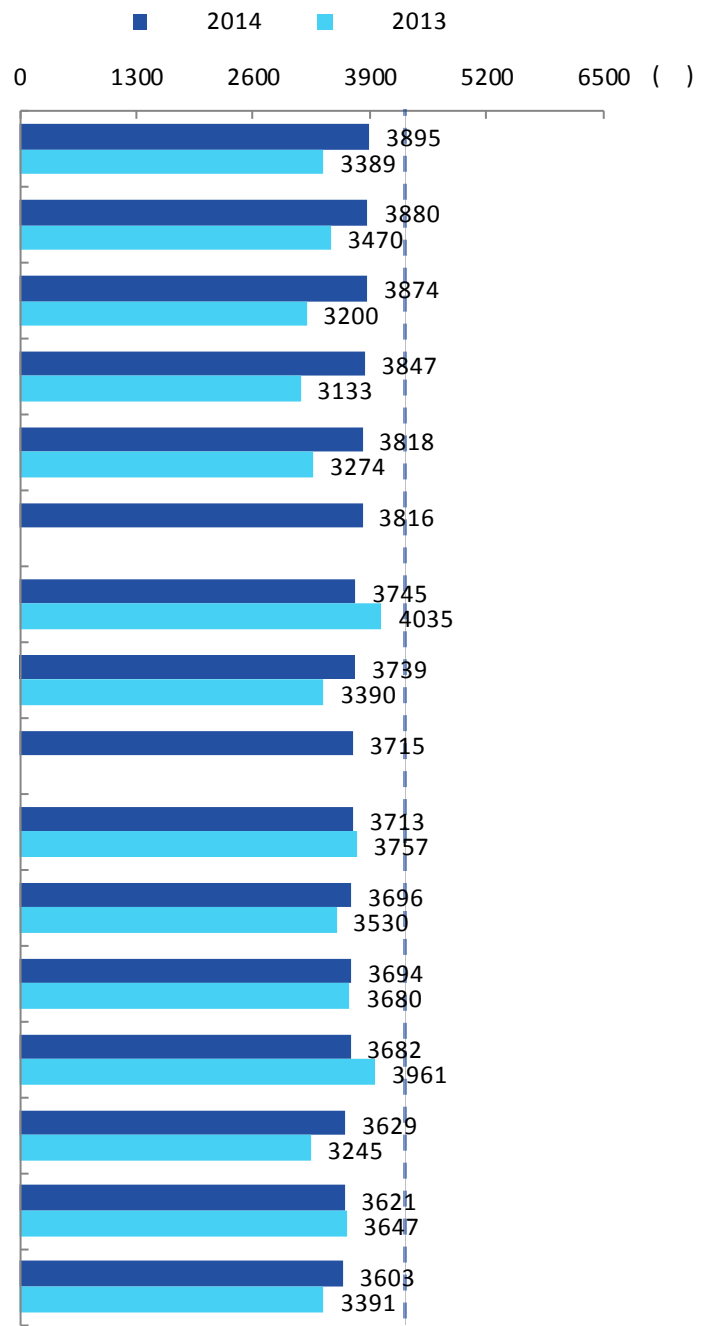
2015



4-6

2013

2015

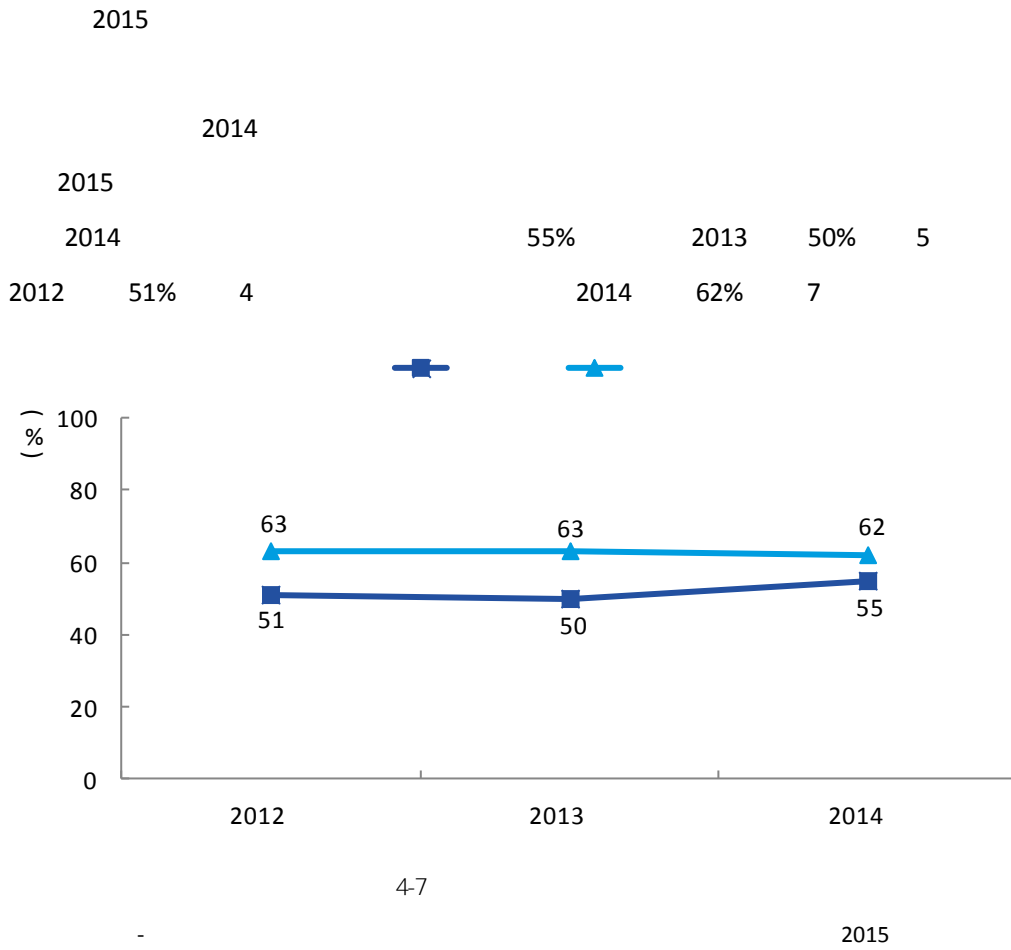


4-6

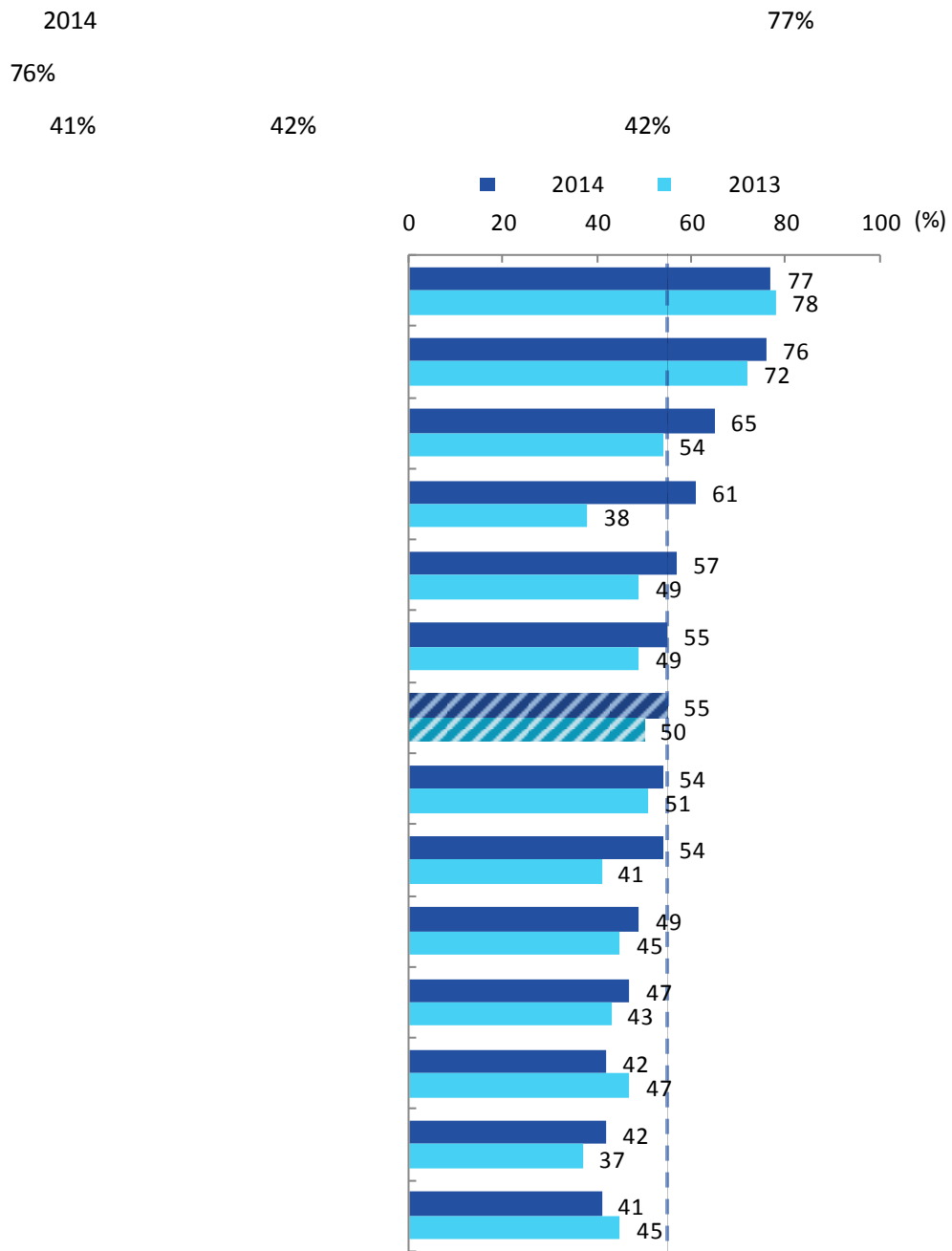
2013

2015

1.



2.

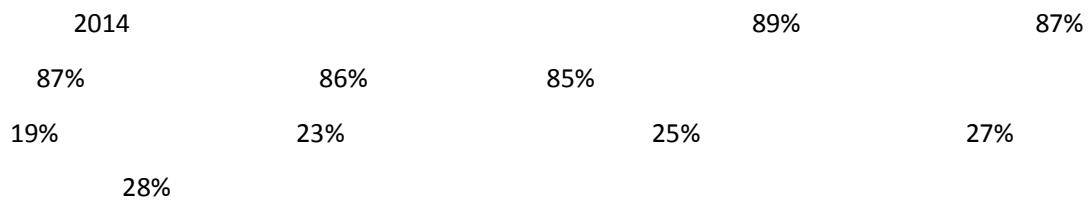


4-8

%

2015

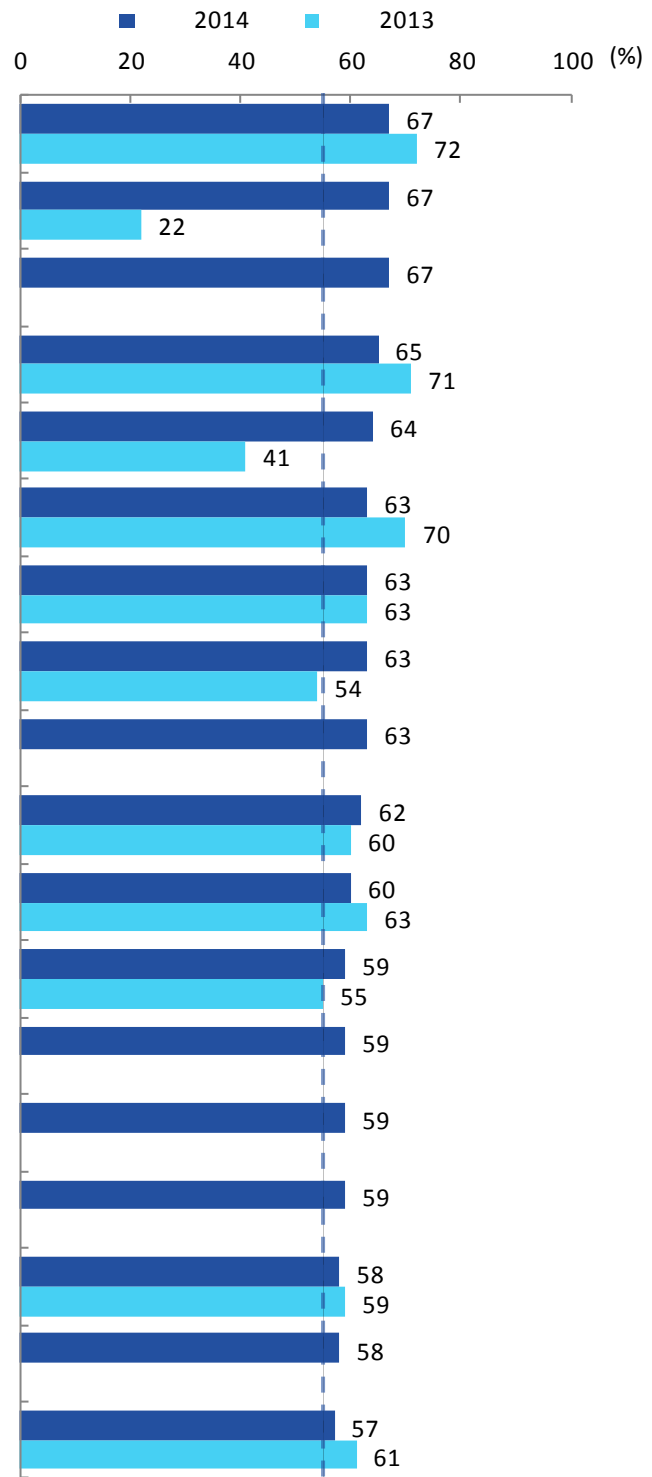
3.



4-9

%

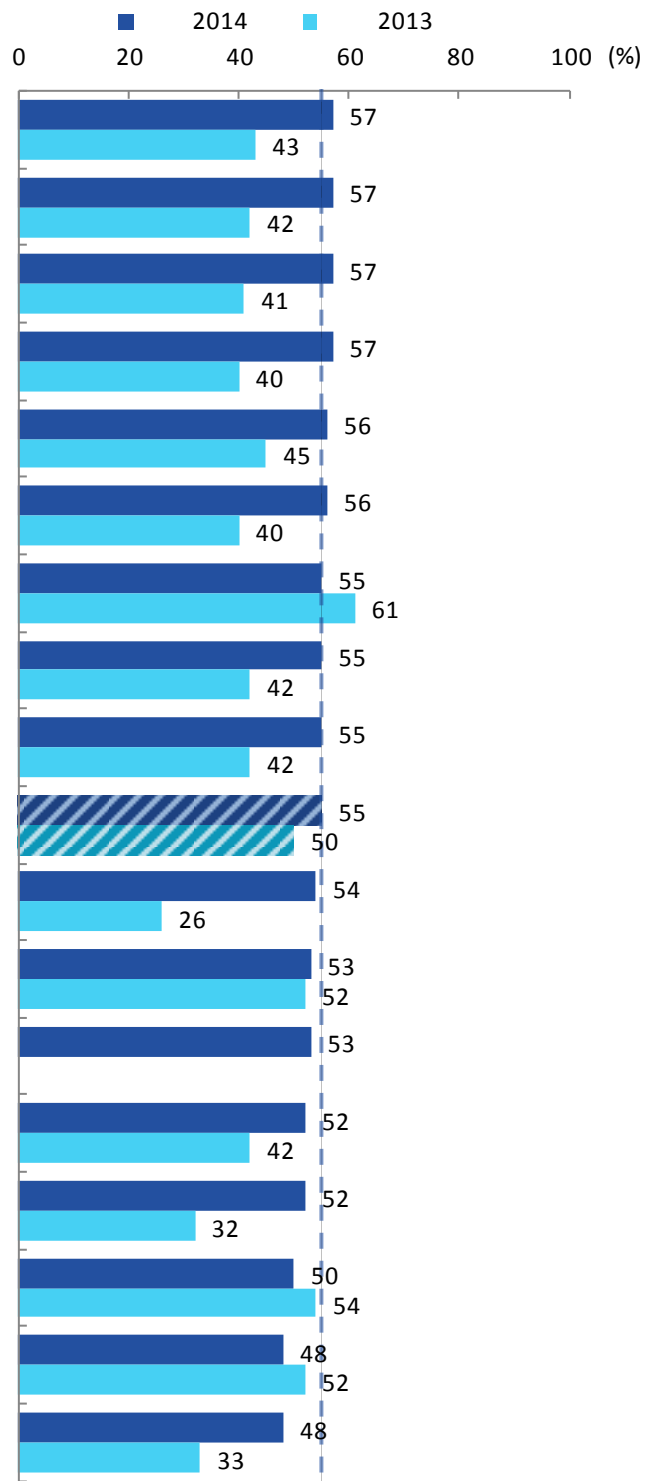
2015



4-9

%

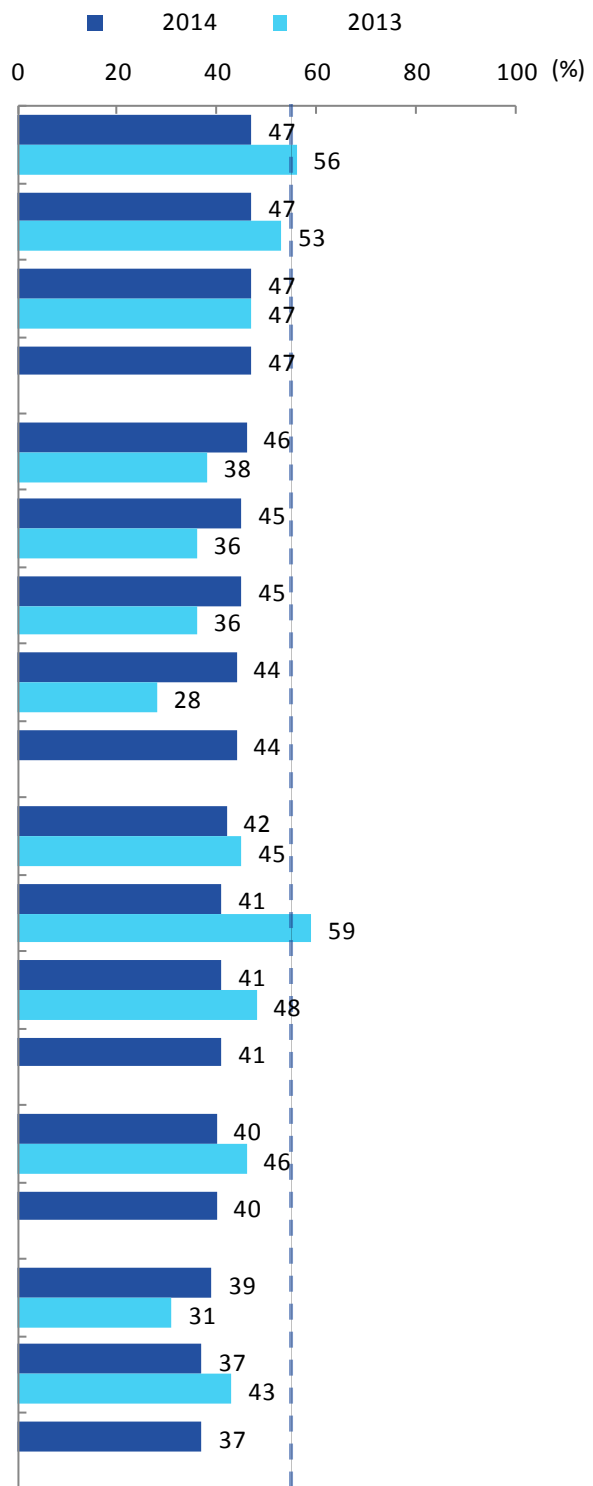
2015



4-9

%

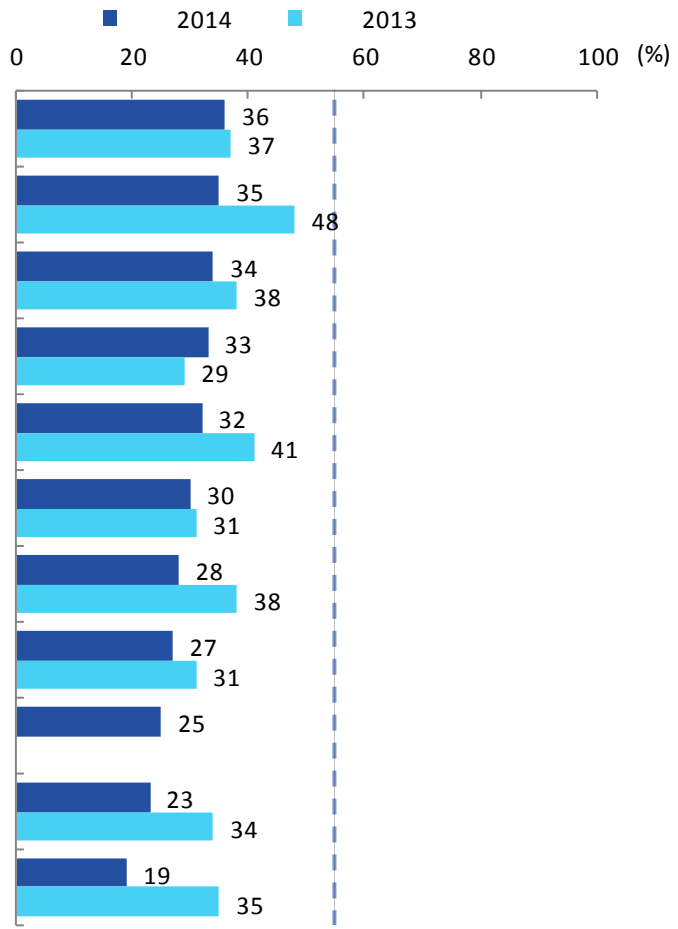
2015



4-9

%

2015



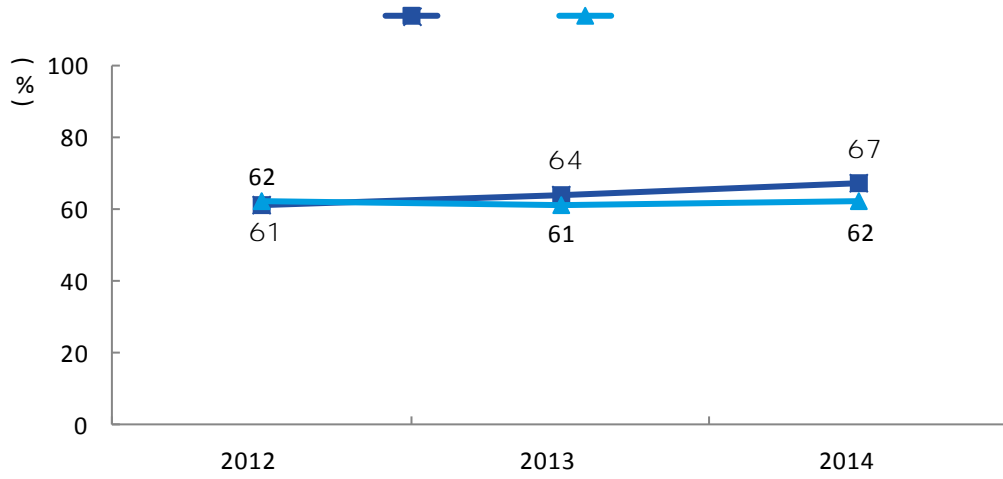
4-9

%

2015

1.

2014	67%	2013	64%	3
2012	61%	2014	62%	5



4-10

-

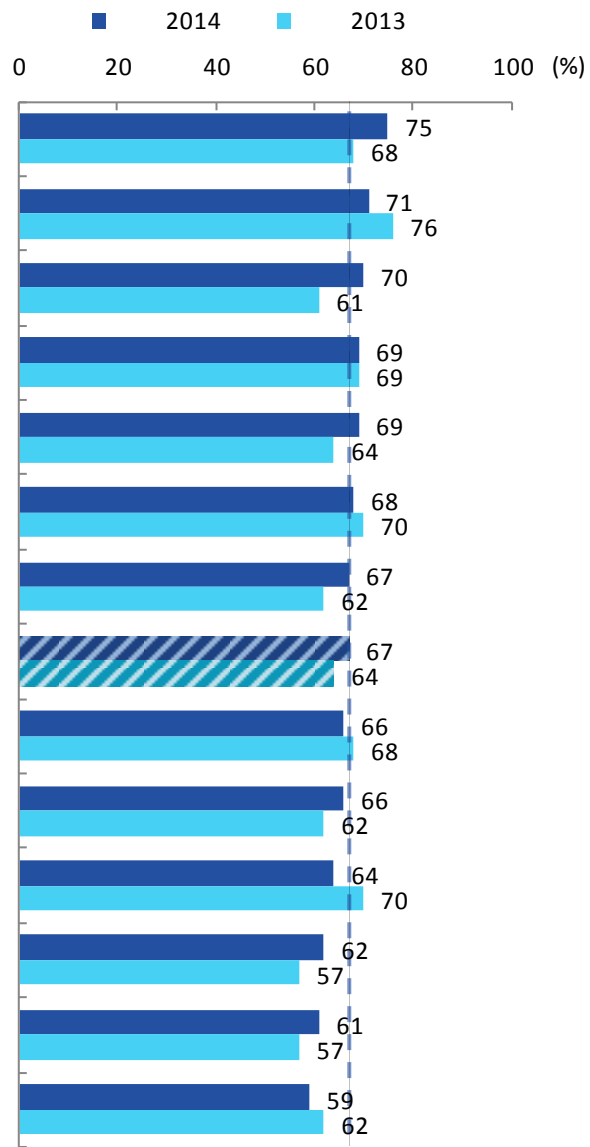
2015

4.

2014

75%

59%

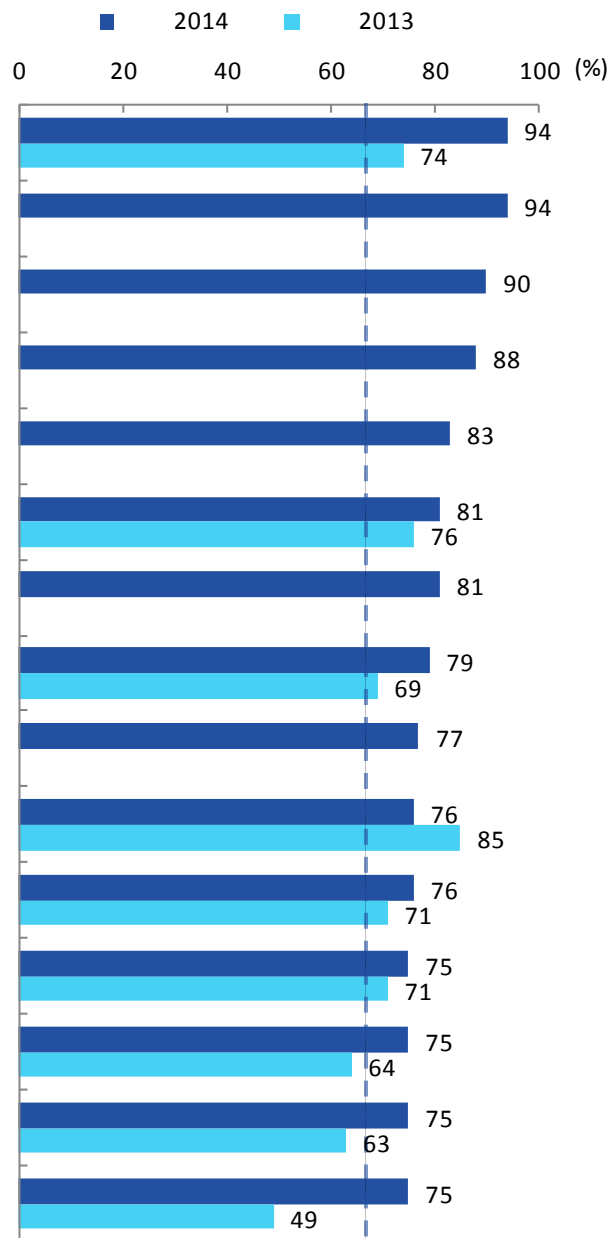


4-11

2015

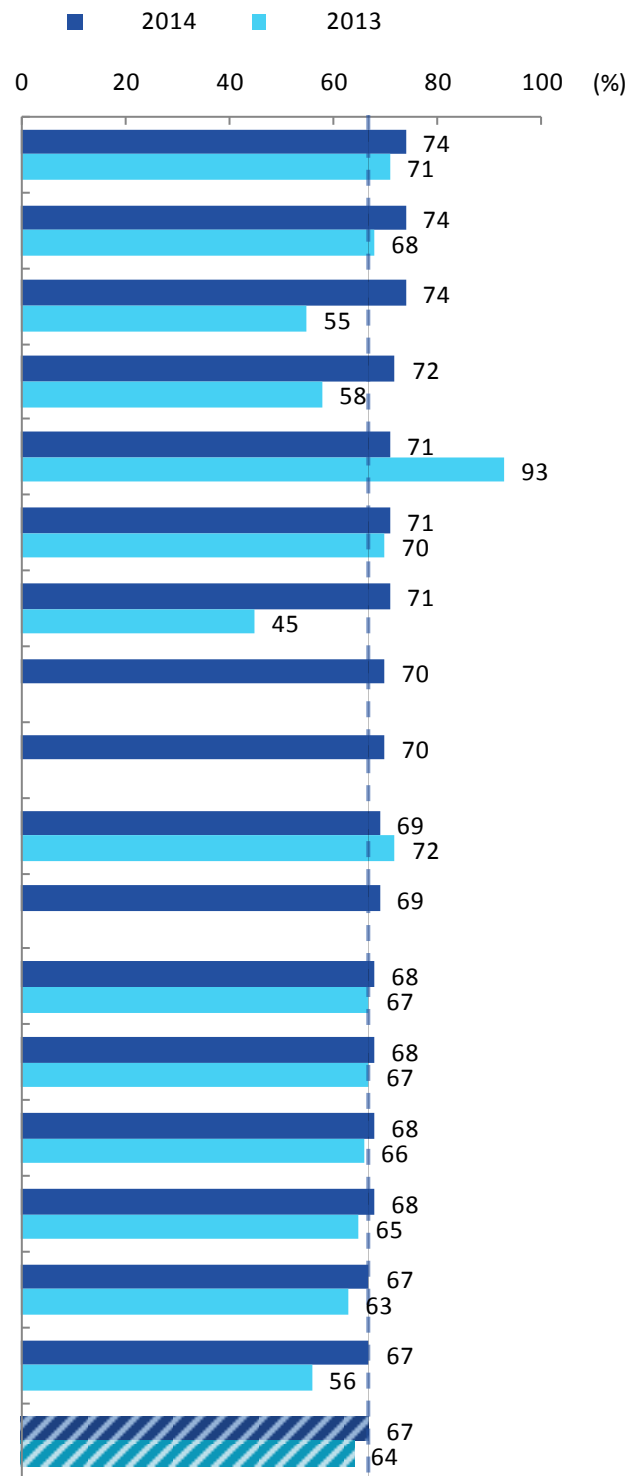
5.

2014 94% 90% 47% 94% 43%



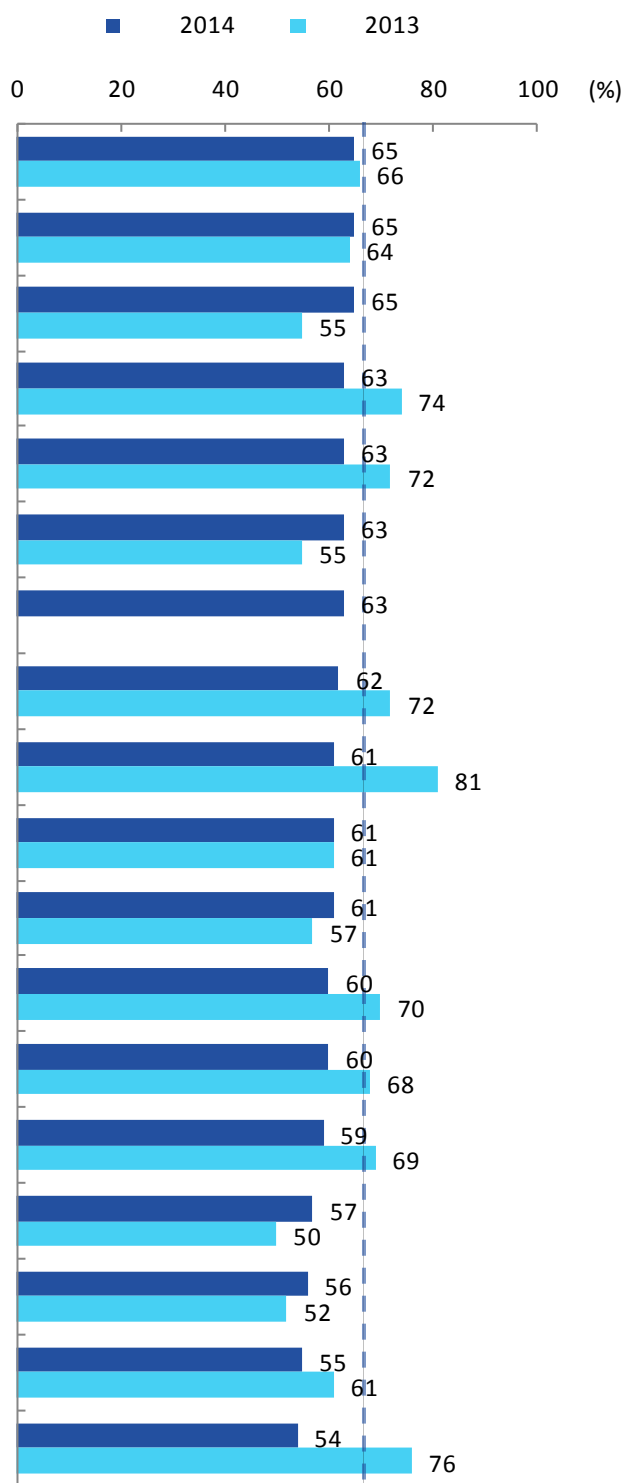
4-12

2015



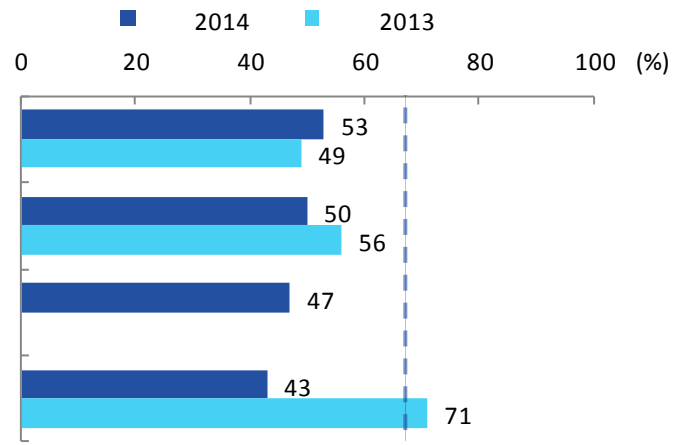
4-12

2015



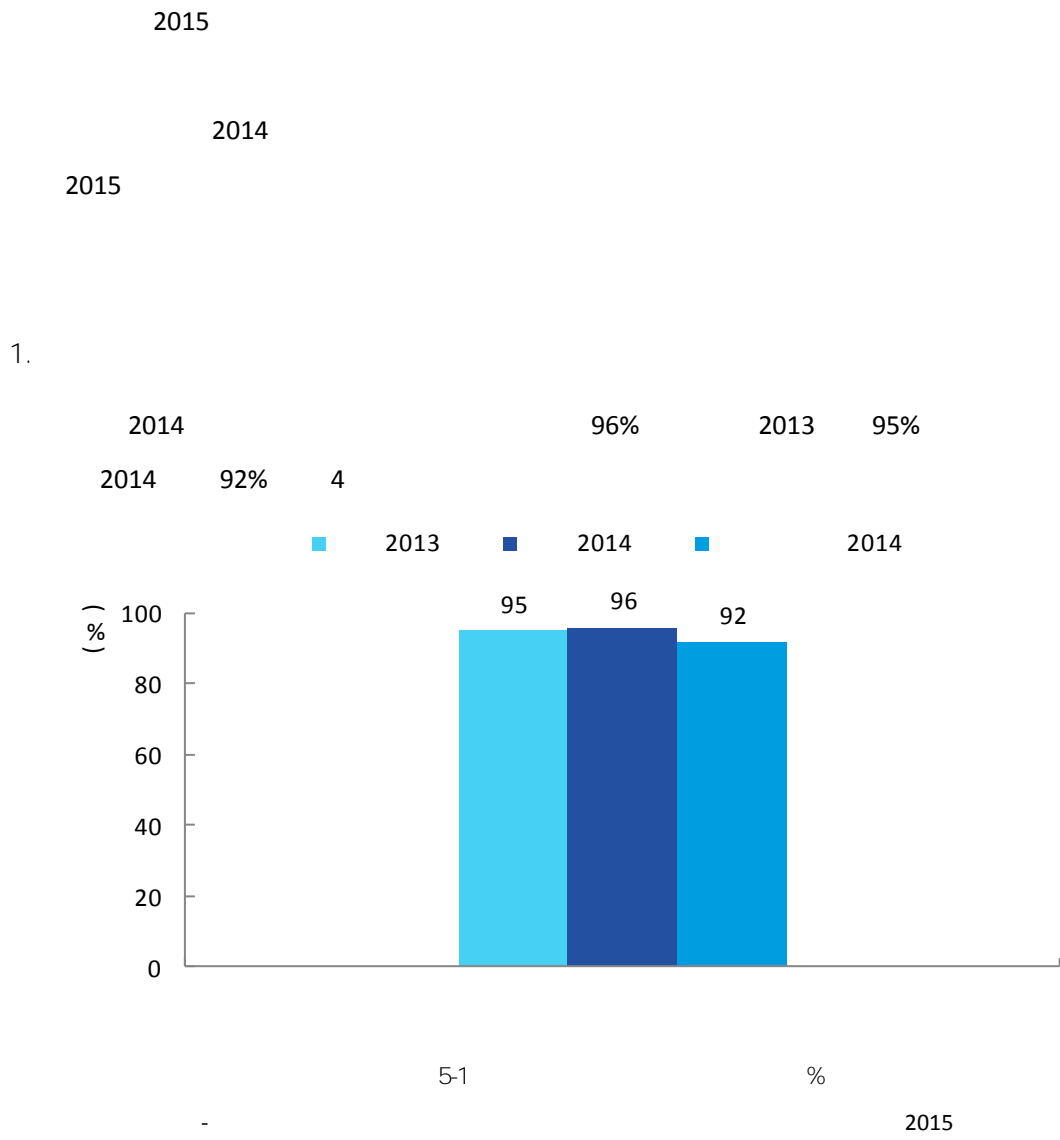
4-12

2015



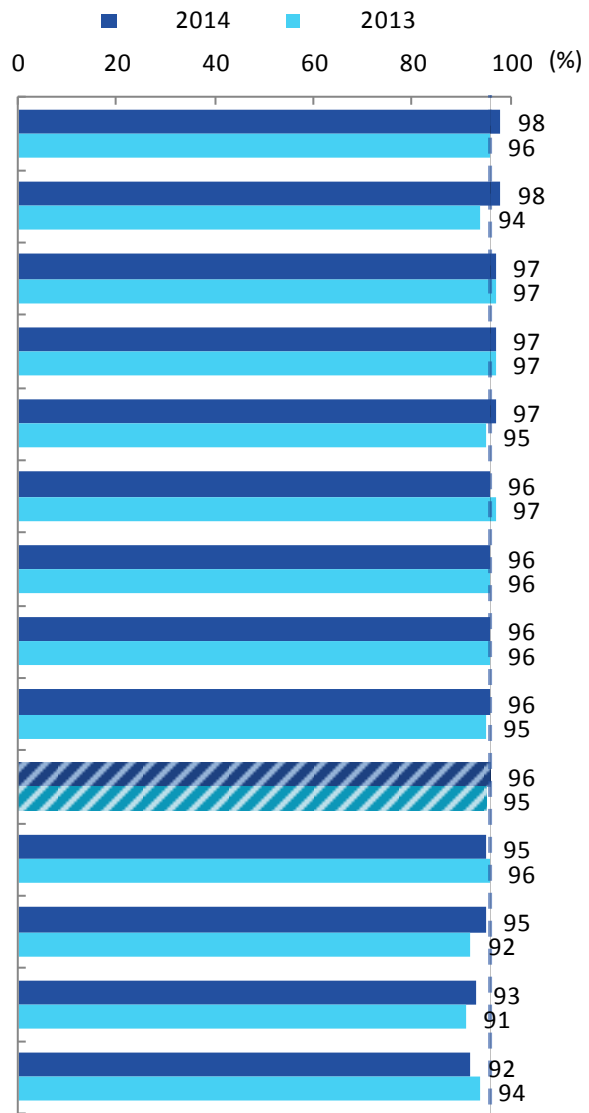
4-12

2015



2.

2014 98% 93% 98% 92%



5-2

%

2015

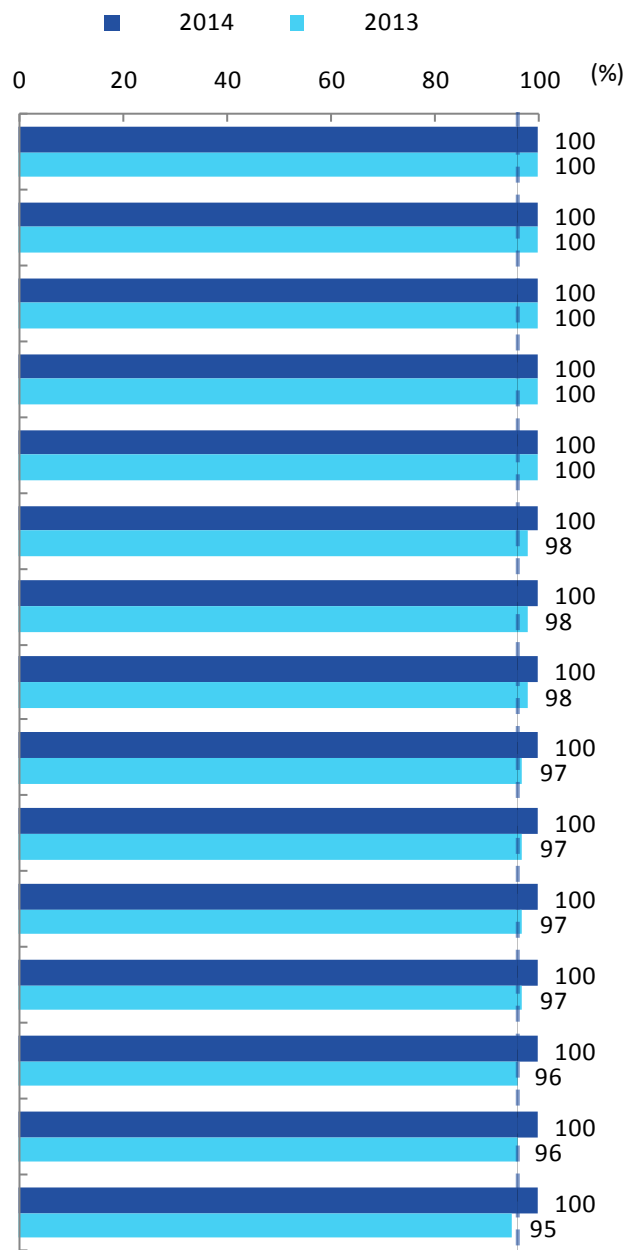
3.

2014

29

100%

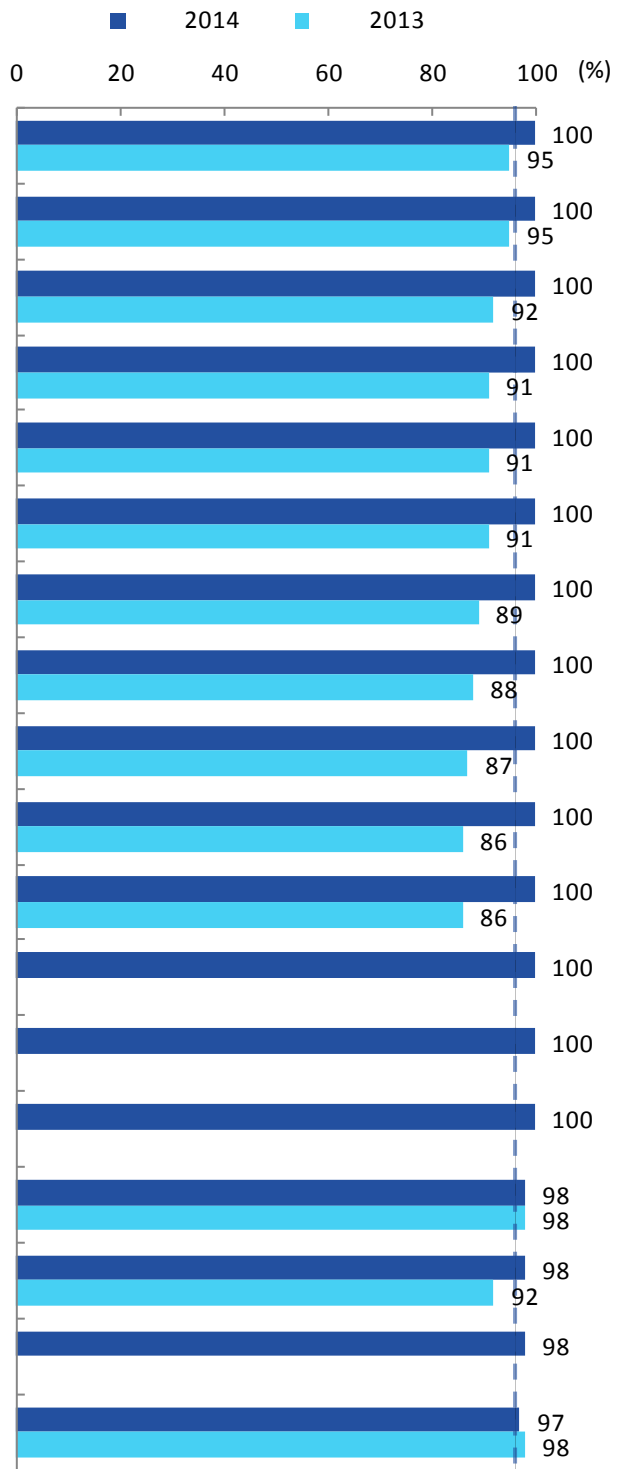
81%



5-3

%

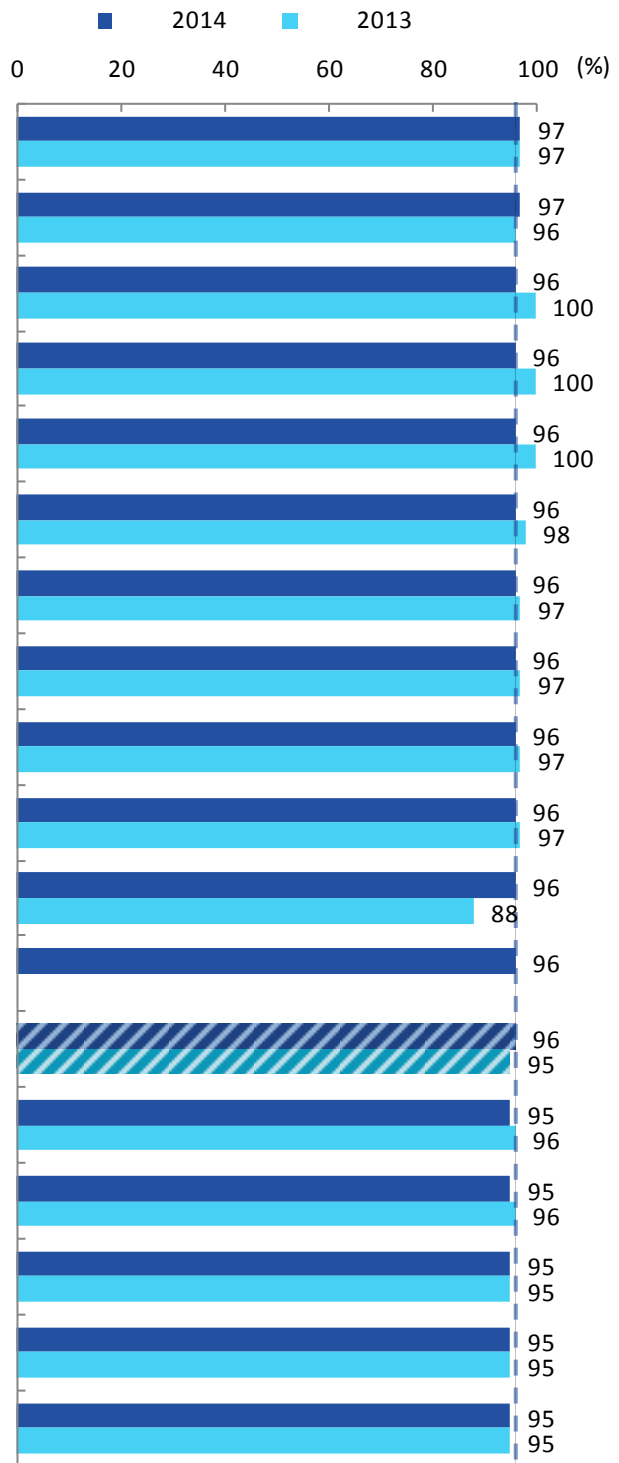
2015



5-3

%

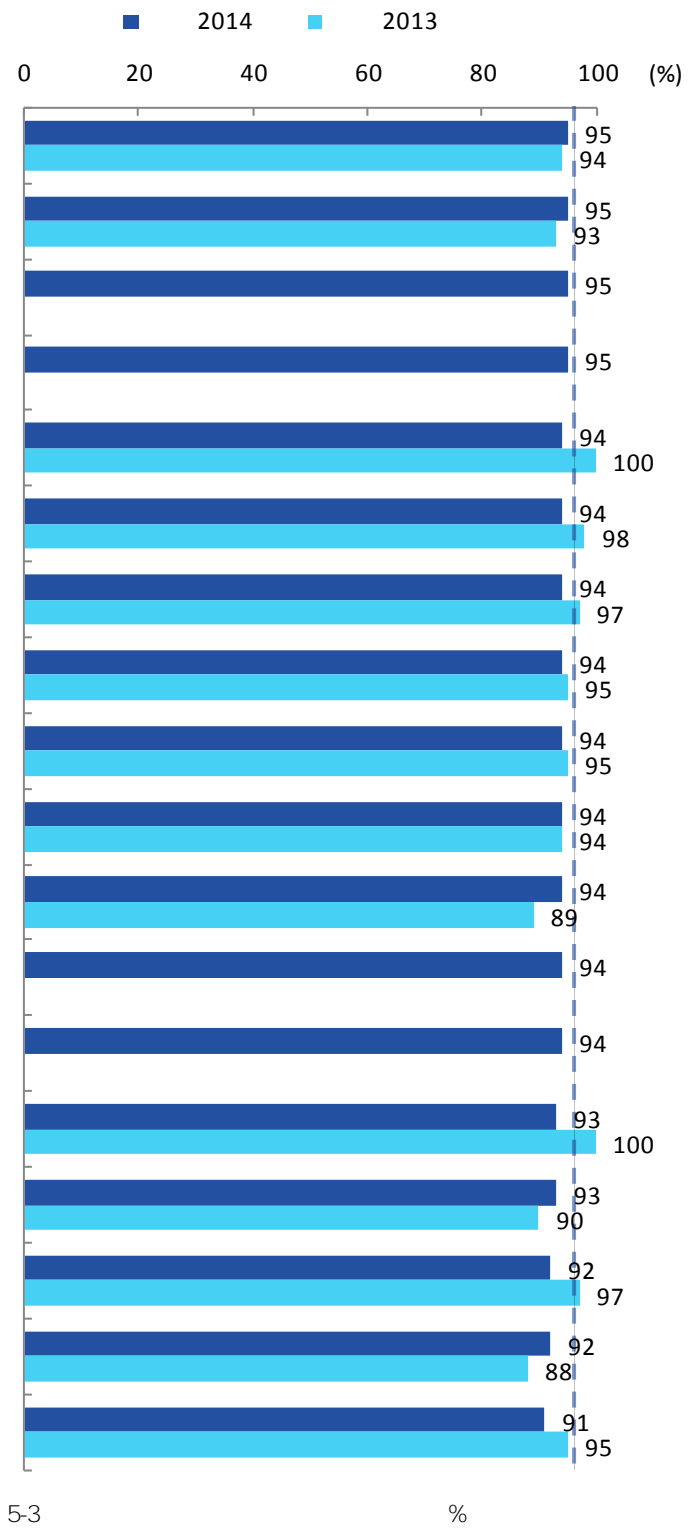
2015



5-3

%

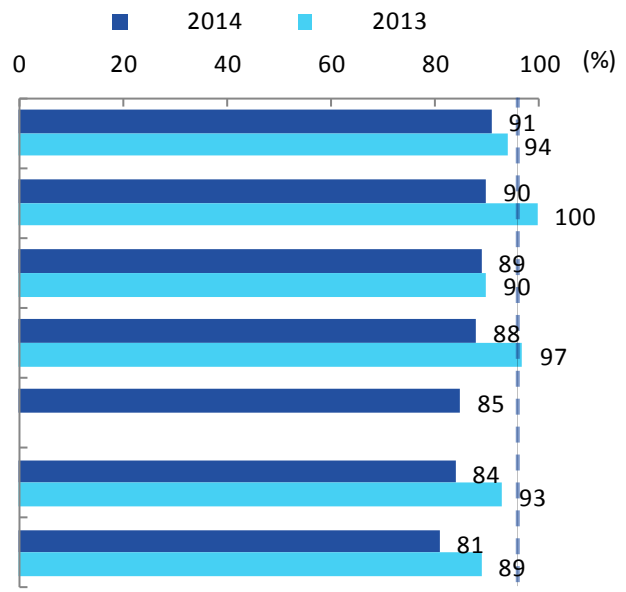
2015



5-3

%

2015

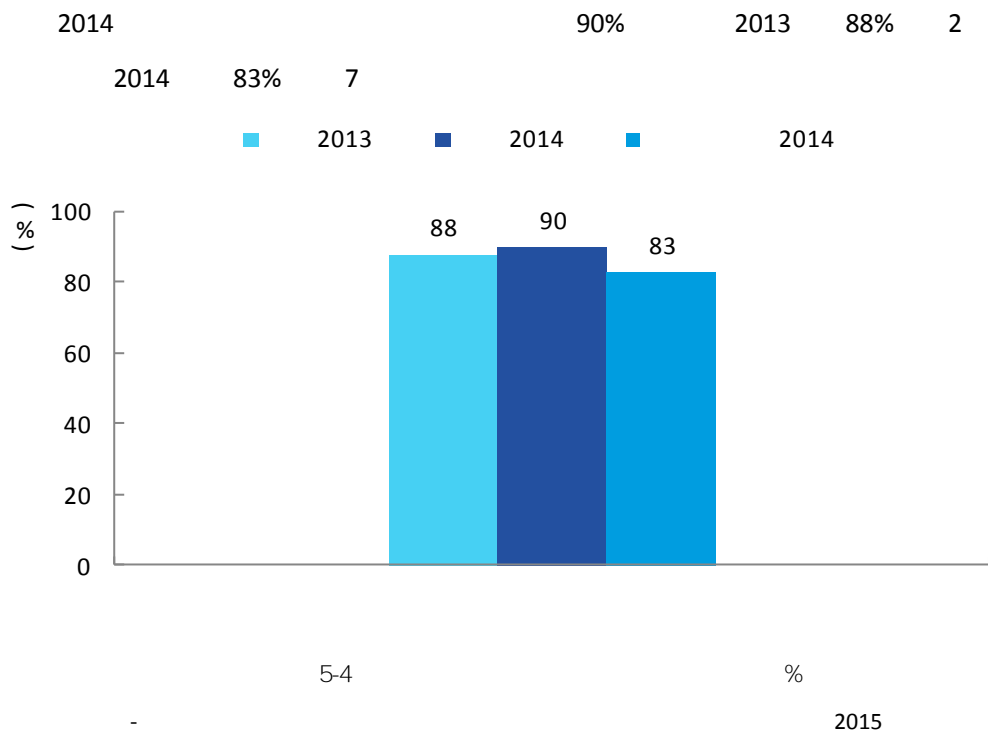


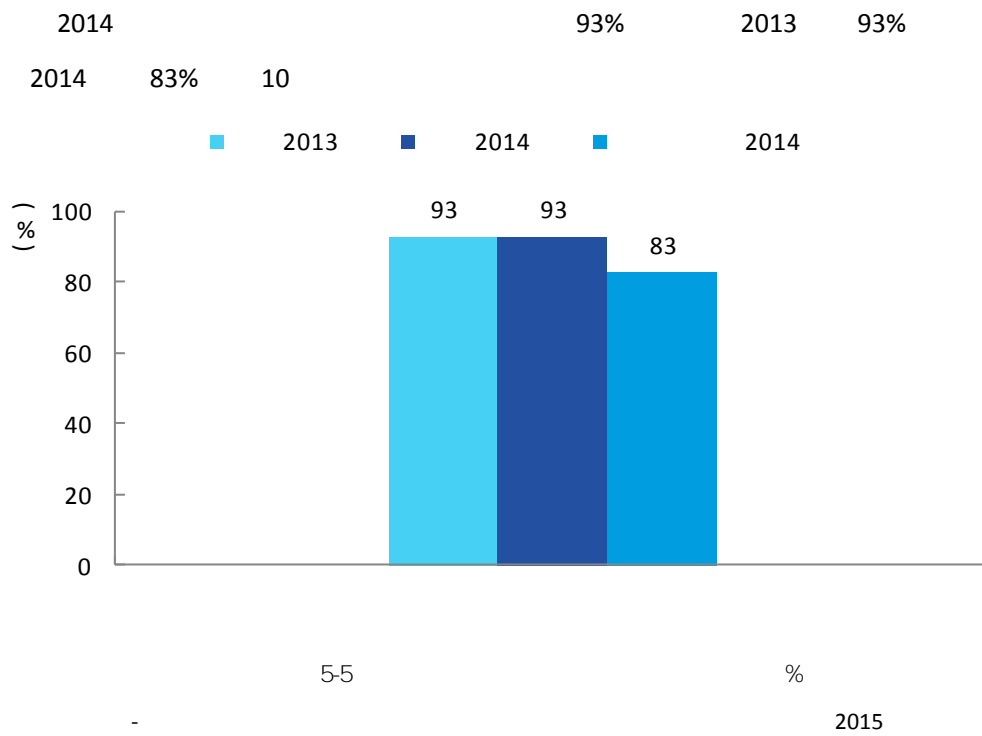
5-3

%

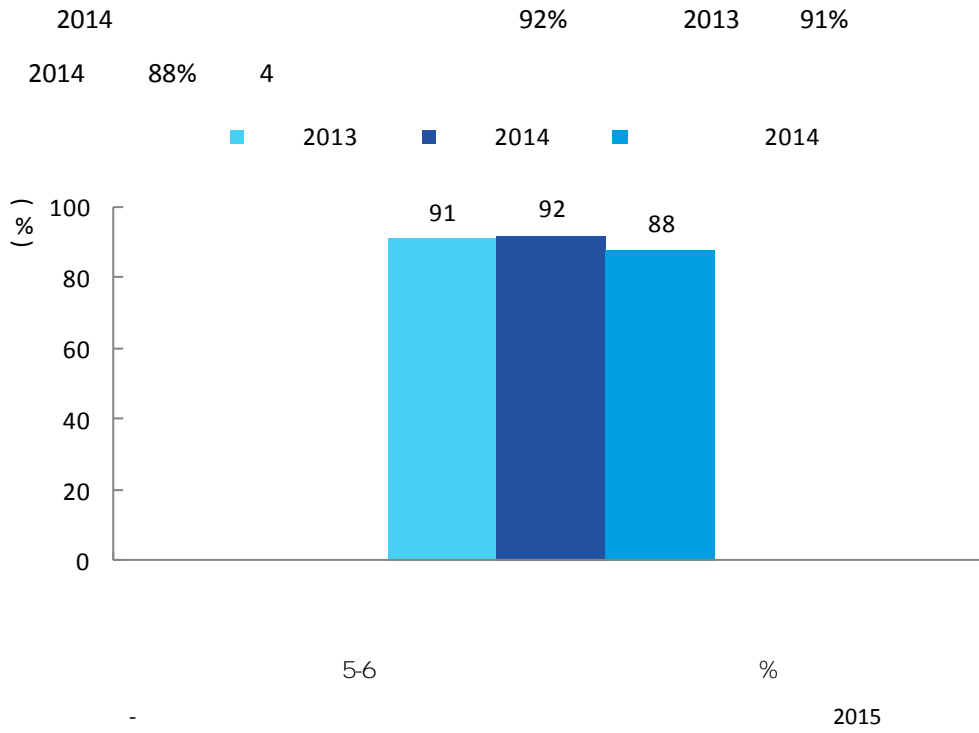
-

2015

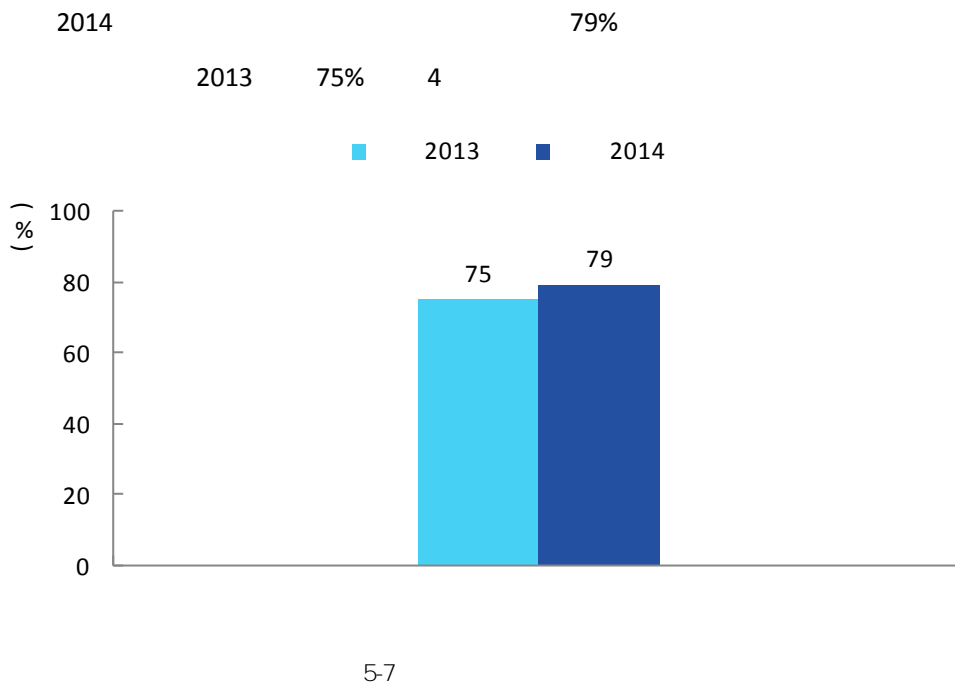


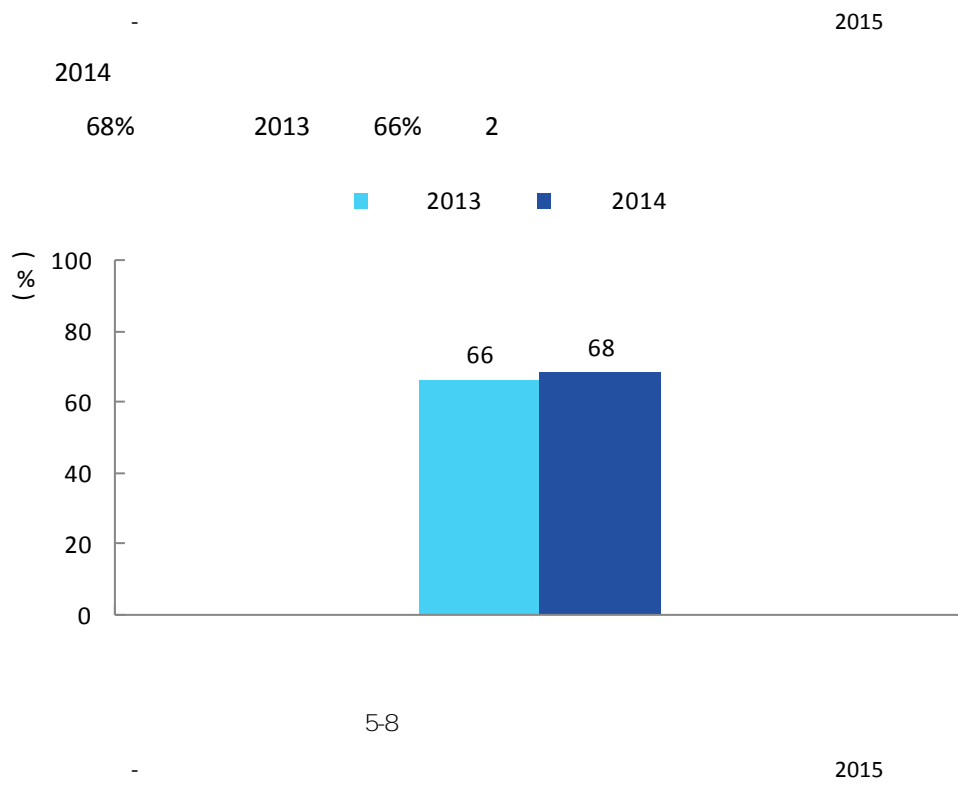


1.

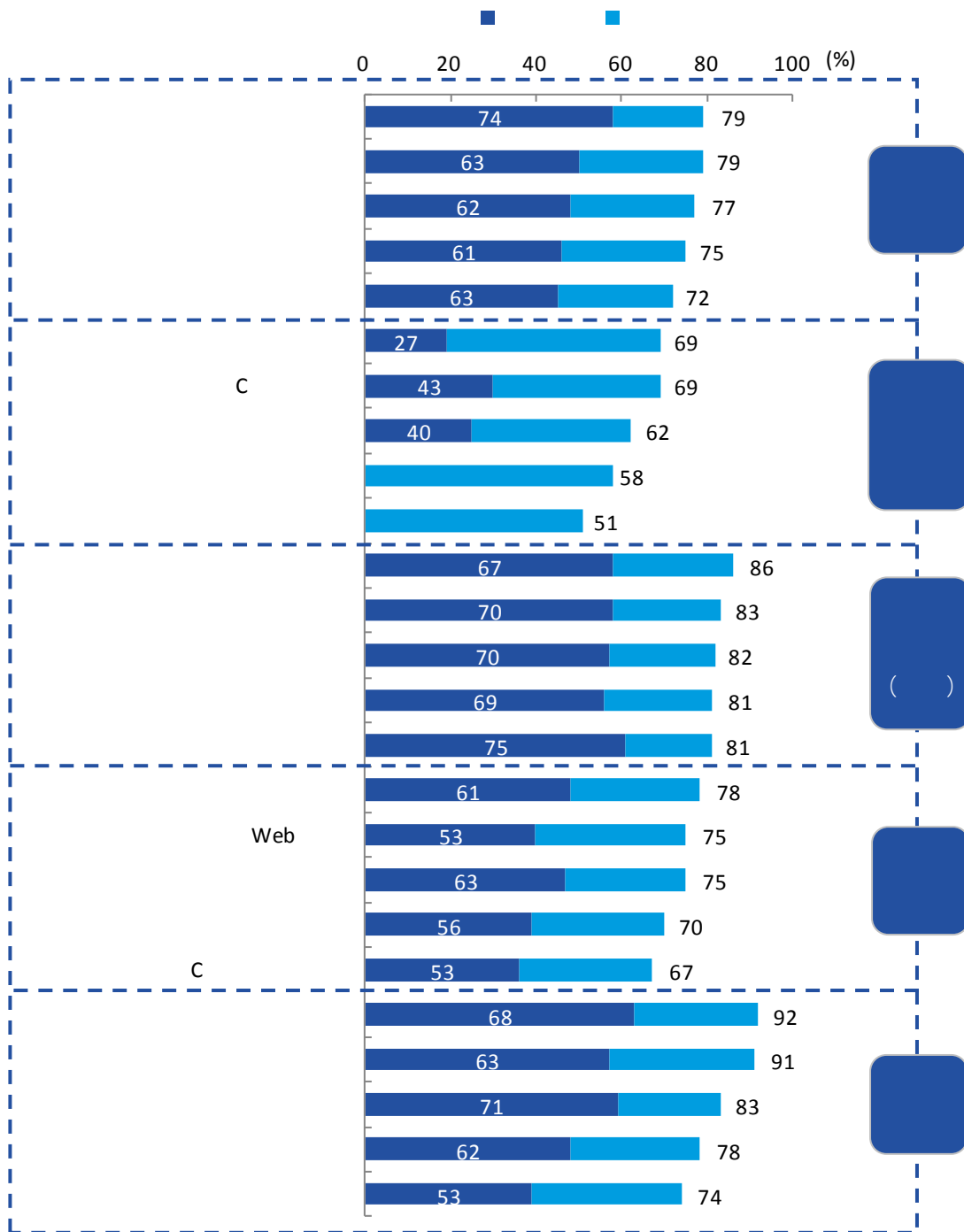


2.





3.



5-9

2015

4.

"

"

"

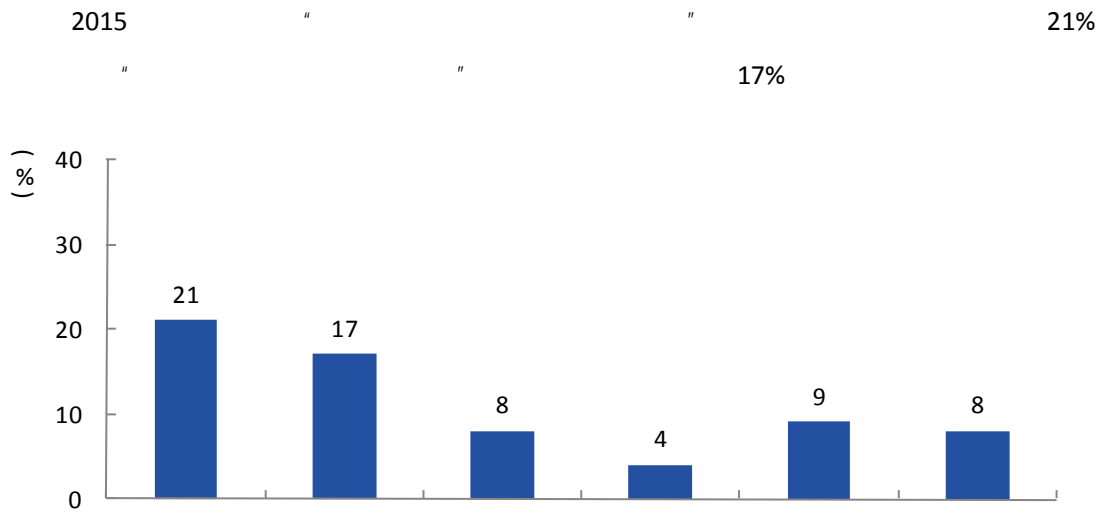
"

16

3

800

1.



5-10
- 2015

2.

” “ + + ” “ + + ” “ +

“ + + + ” “ +

+ + + + +

" "

" "

100

"

"

" 100 "

100

100

100

100

